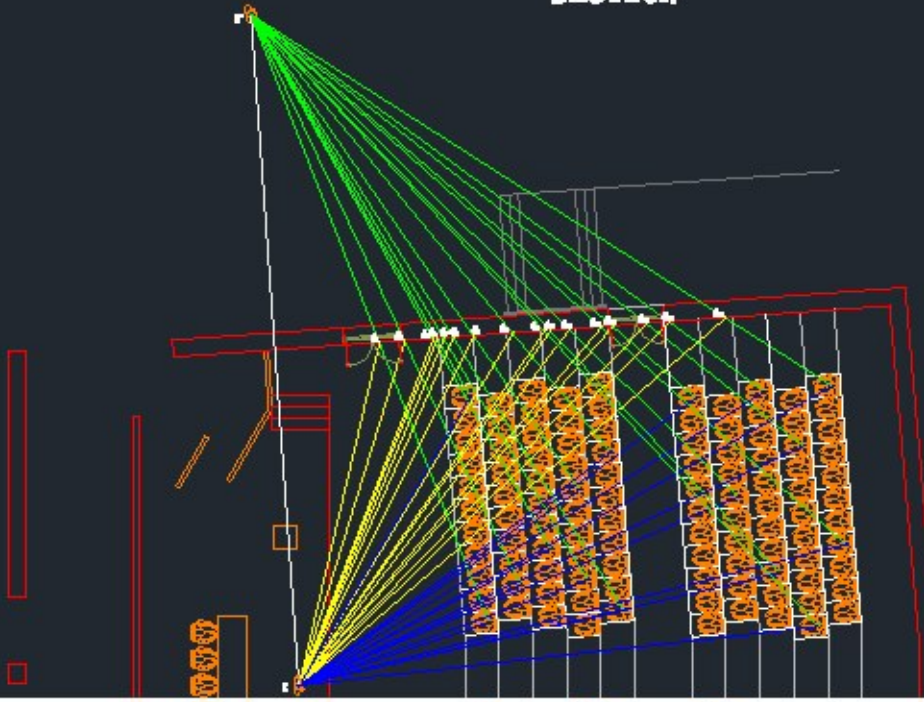
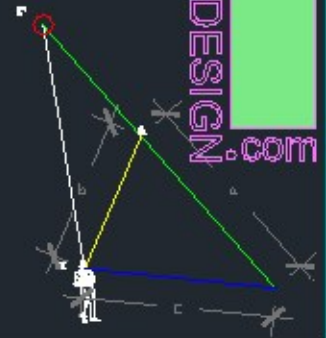




SECTION



PLAN

SL.NO	a	b	c	a + b - c	Listening Condition
1	11'8"	8'1"	20'8"	8'8"	Excellent for speech and music
2	11'11"	8'7"	12'8"	7'10"	Excellent for speech and music
3	13'8"	9'1"	14'8"	7'1"	Excellent for speech and music
4	13'8"	9'8"	19'3"	8'8"	Excellent for speech and music
5	18'11"	13'2"	25'3"	4'8"	Excellent for speech and music
6	18'7"	12'11"	25'4"	4'8"	Excellent for speech and music
7	17'4"	15'10"	27'3"	2'11"	Excellent for speech and music
8	18'3"	14'8"	29'2"	3'7"	Excellent for speech and music
9	18'10"	15'8"	31'2"	5'4"	Excellent for speech and music

SL.No.	Path Difference in ft.	Listening Condition
1.	< 26'	Excellent for speech and music
2.	26' to 34'	Good for speech and music
3.	34' to 50'	Marginal (Fair)
4.	50' to 66'	Satisfactory
5.	> 66'	Poor unless if strong enough



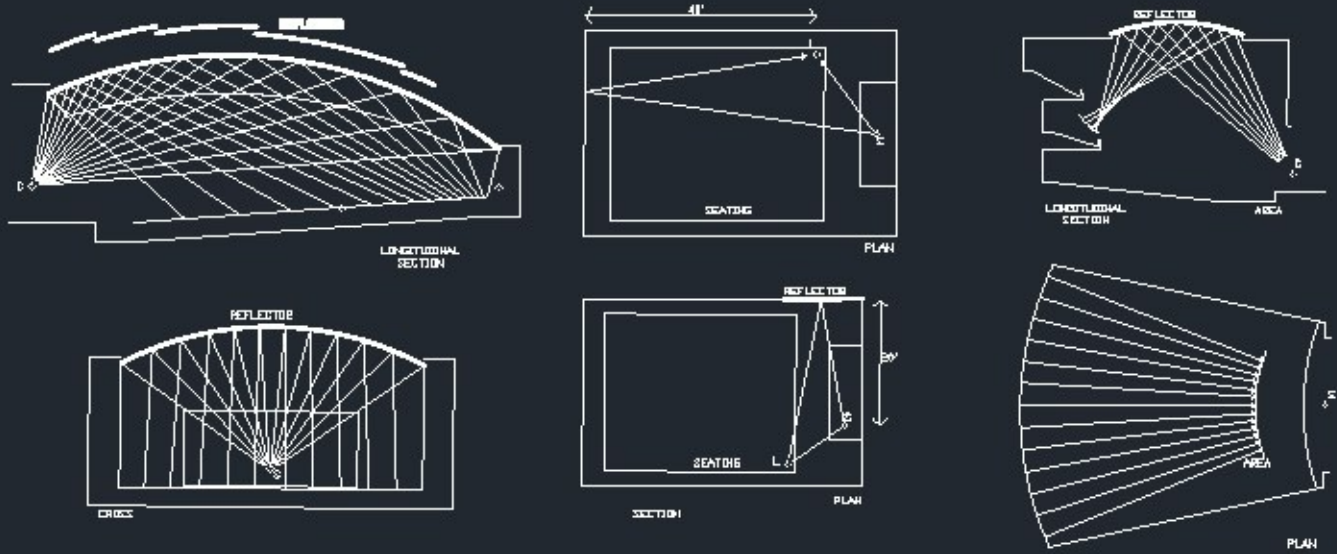
SL.NO	a	b	c	a + b - c	Listening Condition
1	18'10"	19'8"	11'8"	26'4"	Good for speech and music
2	18'2"	20'8"	15'7"	23'3"	Excellent for speech and music
3	15'8"	20'10"	15'1"	19'8"	Excellent for speech and music
4	3'8"	20'11"	18'10"	8'10"	Excellent for speech and music
5	18'8"	21'1"	17'8"	19'7"	Excellent for speech and music
6	18'1"	21'6"	15'8"	20'8"	Excellent for speech and music
7	20'8"	21'11"	19'3"	15'3"	Excellent for speech and music
8	8'8"	23'1"	21'10"	9'11"	Excellent for speech and music
9	22'7"	24'8"	29'4"	17'3"	Excellent for speech and music
10	18'8"	24'6"	27'8"	15'4"	Excellent for speech and music
11	15'4"	23'1"	25'10"	11'7"	Excellent for speech and music
12	18'4"	26'8"	31'7"	15'0"	Excellent for speech and music
13	8'2"	24'8"	27'8"	8'8"	Excellent for speech and music
14	11'1"	26'1"	31'8"	7'11"	Excellent for speech and music
15	8'7"	26'1"	30'10"	4'10"	Excellent for speech and music
16	7'1"	31'8"	34'8"	4'4"	Excellent for speech and music

Architectural Acoustics

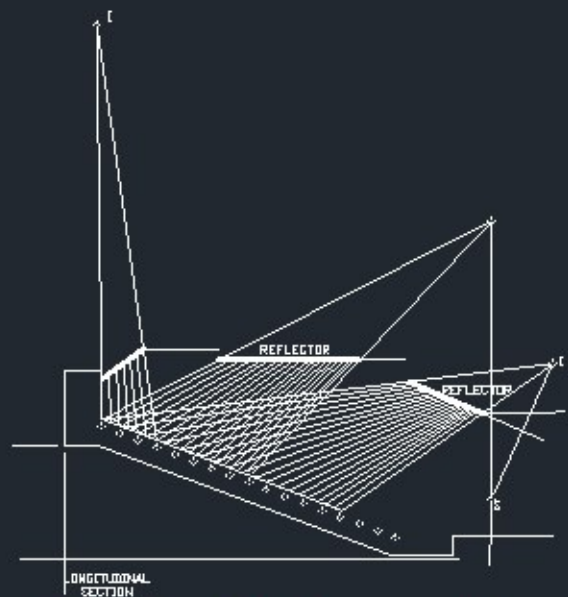
Ray Diagram Analysis of an Auditorium

Scale: 1/100





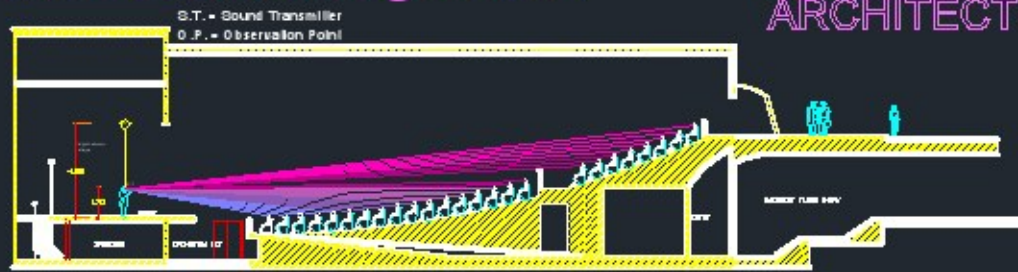
PROGRESSIVE REINFORCEMENT BY SHAPED REFLECTORS



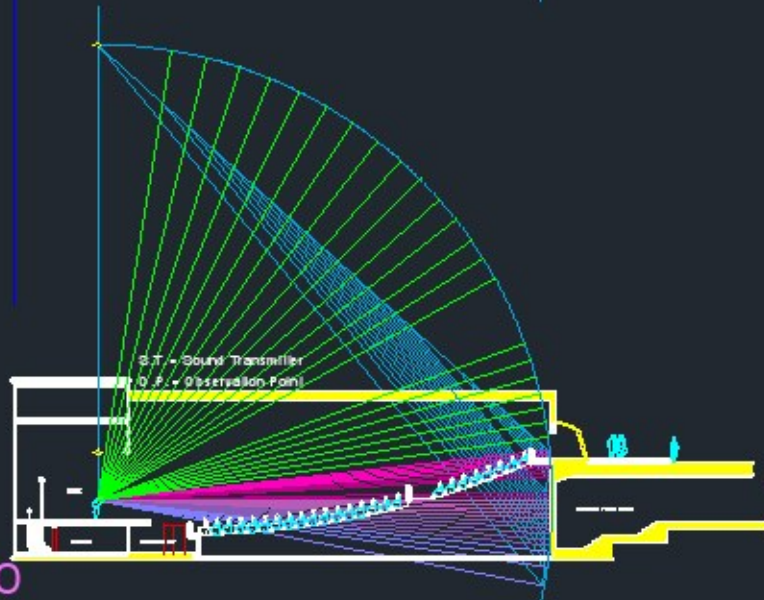
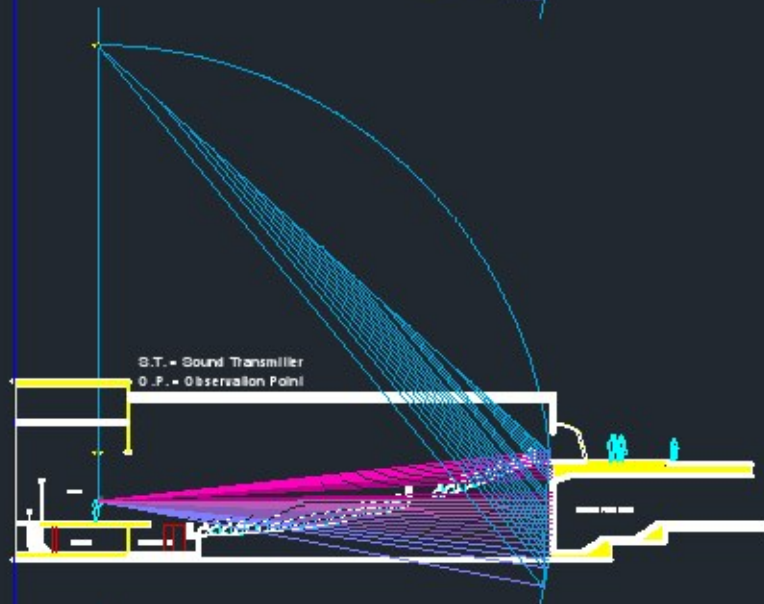
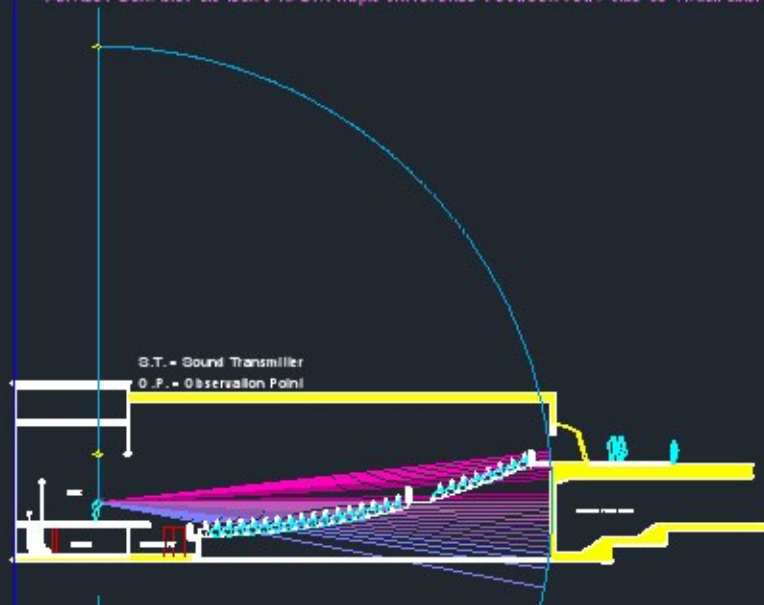
Controlled Reinforcement by Angled Reflectors

Architectural Acoustics

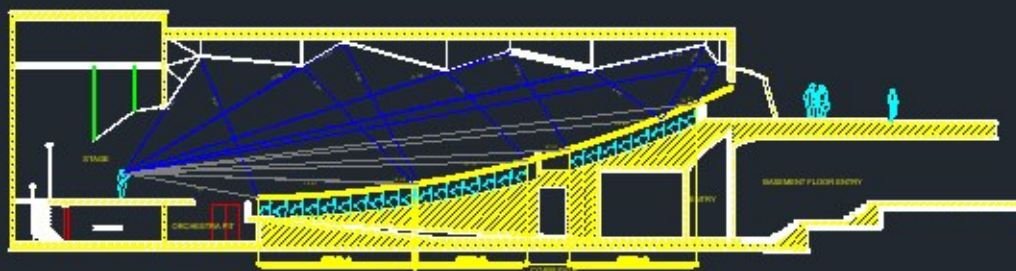
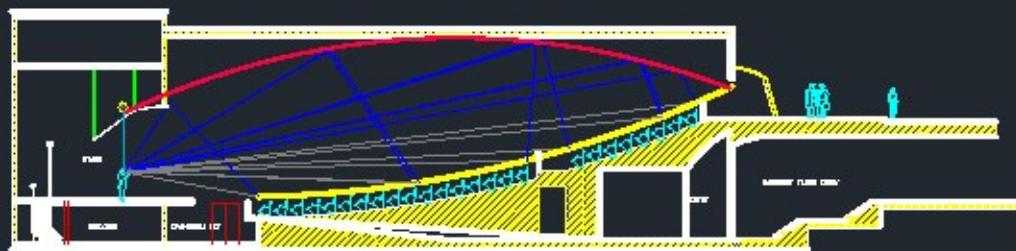
Design Principles for Good Acoustics



Advice: Consider at least 12CM height difference between rows due to visual and acoustical functions.

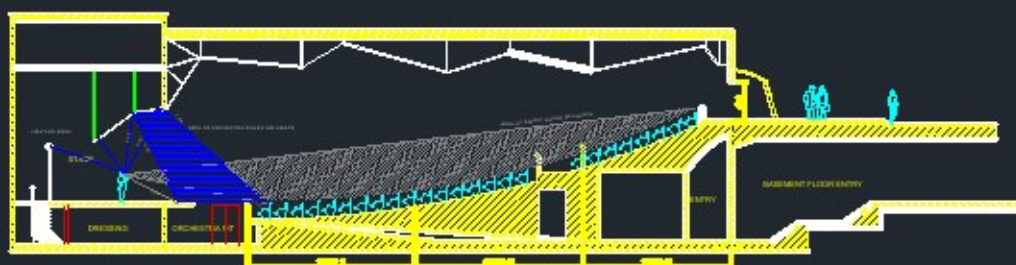


DETERMINING THE POINT WHERE
PAIRL MUST BE LOCATED.



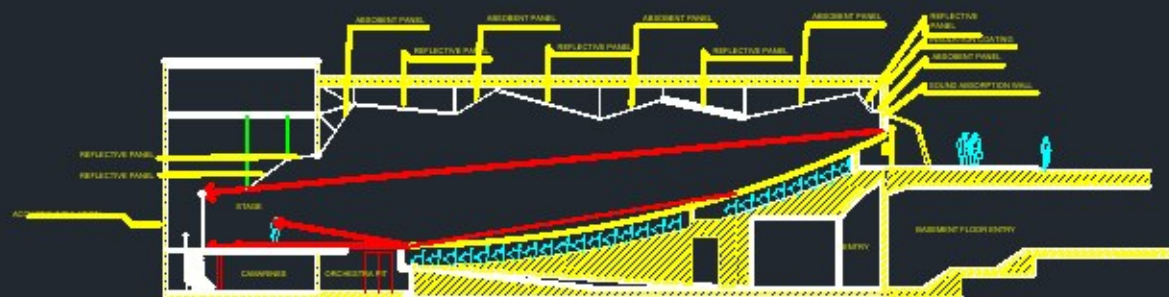
ZONE 1					
REFLECTED SOUND	1.000	0.000	0.000	0.000	0.000
REFLECTED SOUND	0.000	0.000	0.000	0.000	0.000
ZONE 2					
REFLECTED SOUND	1.000	0.000	0.000	0.000	0.000
REFLECTED SOUND	0.000	0.000	0.000	0.000	0.000
ZONE 3					
REFLECTED SOUND	1.000	0.000	0.000	0.000	0.000
REFLECTED SOUND	0.000	0.000	0.000	0.000	0.000
ZONE 4					
REFLECTED SOUND	1.000	0.000	0.000	0.000	0.000
REFLECTED SOUND	0.000	0.000	0.000	0.000	0.000

INDIRECT SOUND
— DIRECT SOUND



ZONE 1					
REFLECTED SOUND	1.000	0.000	0.000	0.000	0.000
REFLECTED SOUND	0.000	0.000	0.000	0.000	0.000
ZONE 2					
REFLECTED SOUND	1.000	0.000	0.000	0.000	0.000
REFLECTED SOUND	0.000	0.000	0.000	0.000	0.000
ZONE 3					
REFLECTED SOUND	1.000	0.000	0.000	0.000	0.000
REFLECTED SOUND	0.000	0.000	0.000	0.000	0.000

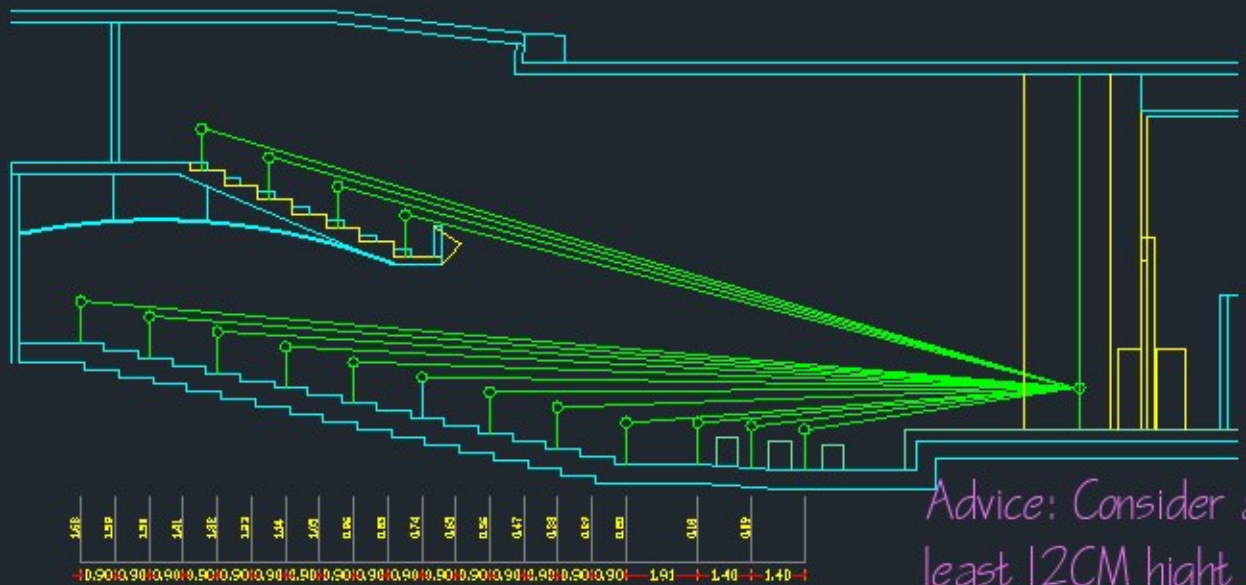
SONIDO INDIRECTO
— DIRECT SOUND



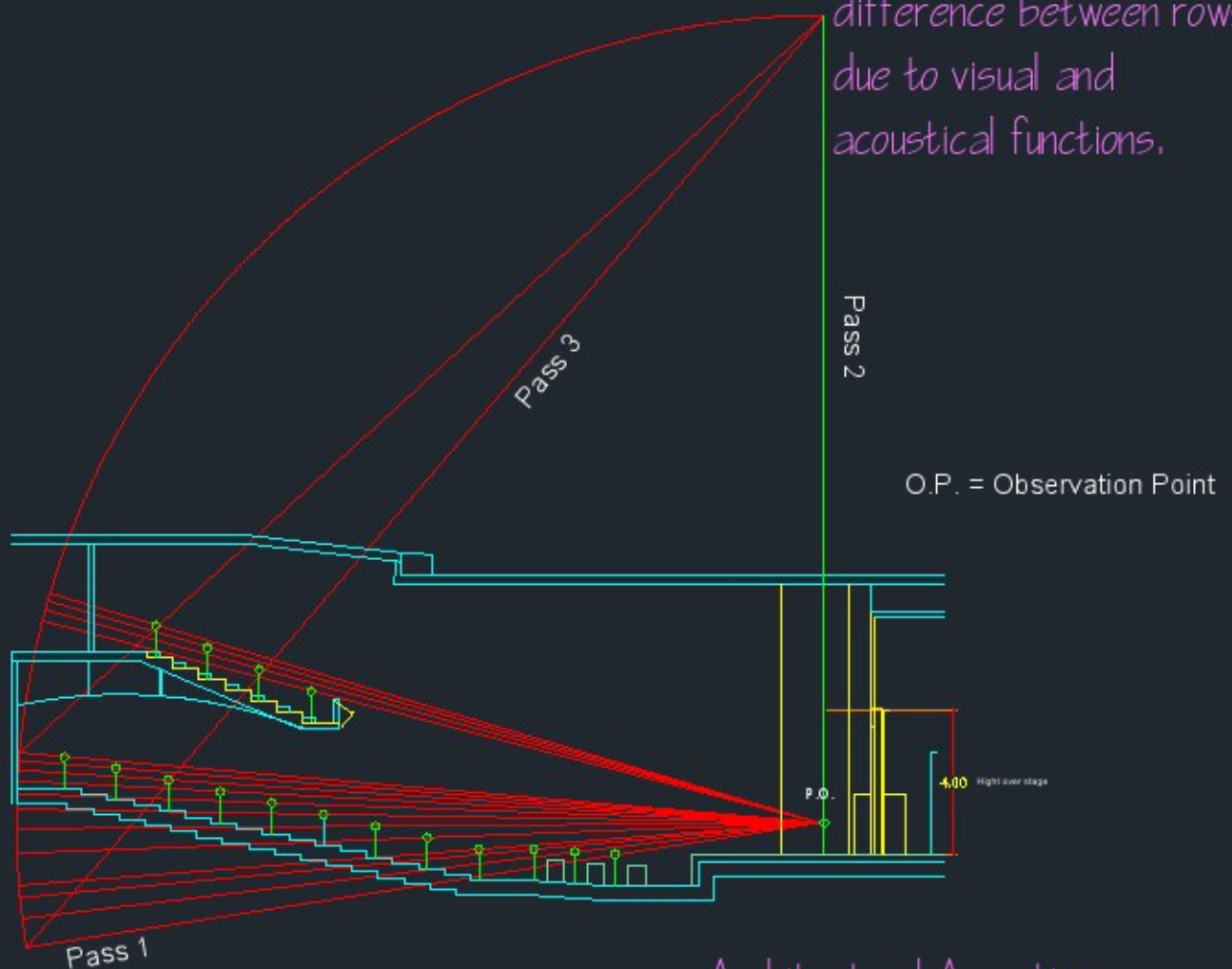
LOCATION OF ACOUSTIC PANELS.

ACOUSTIC ANALYSIS

ACOUSTIC SHELL



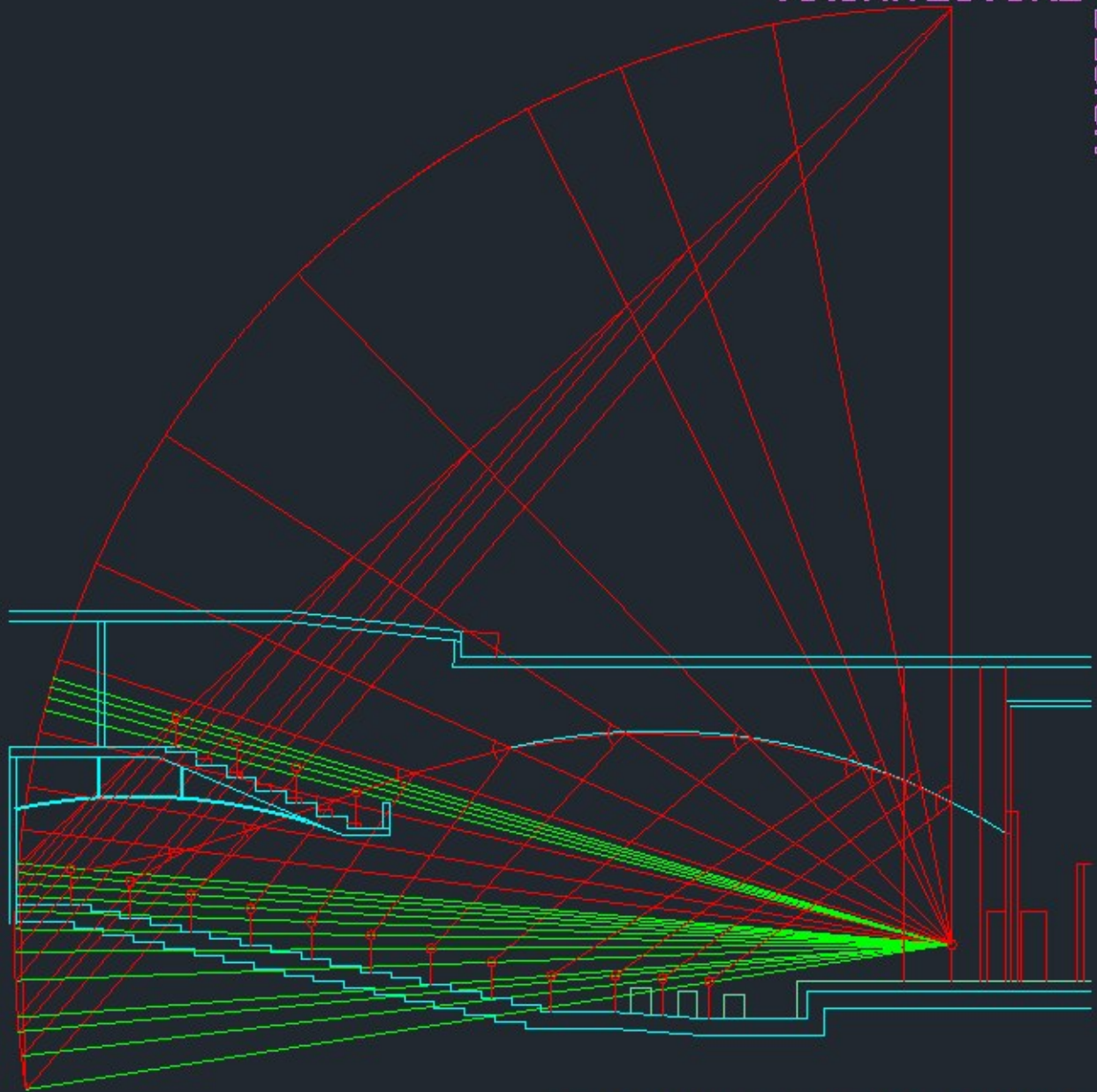
Advice: Consider at least 12CM hight difference between rows due to visual and acoustical functions.



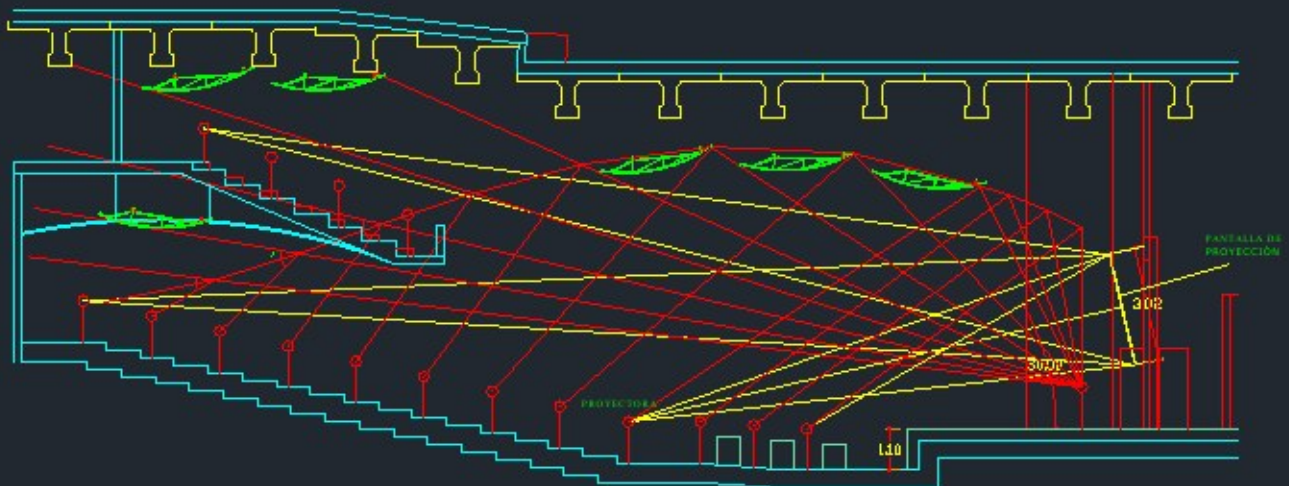
Architectural Acoustics

Ray Diagram Analysis of an Auditorium

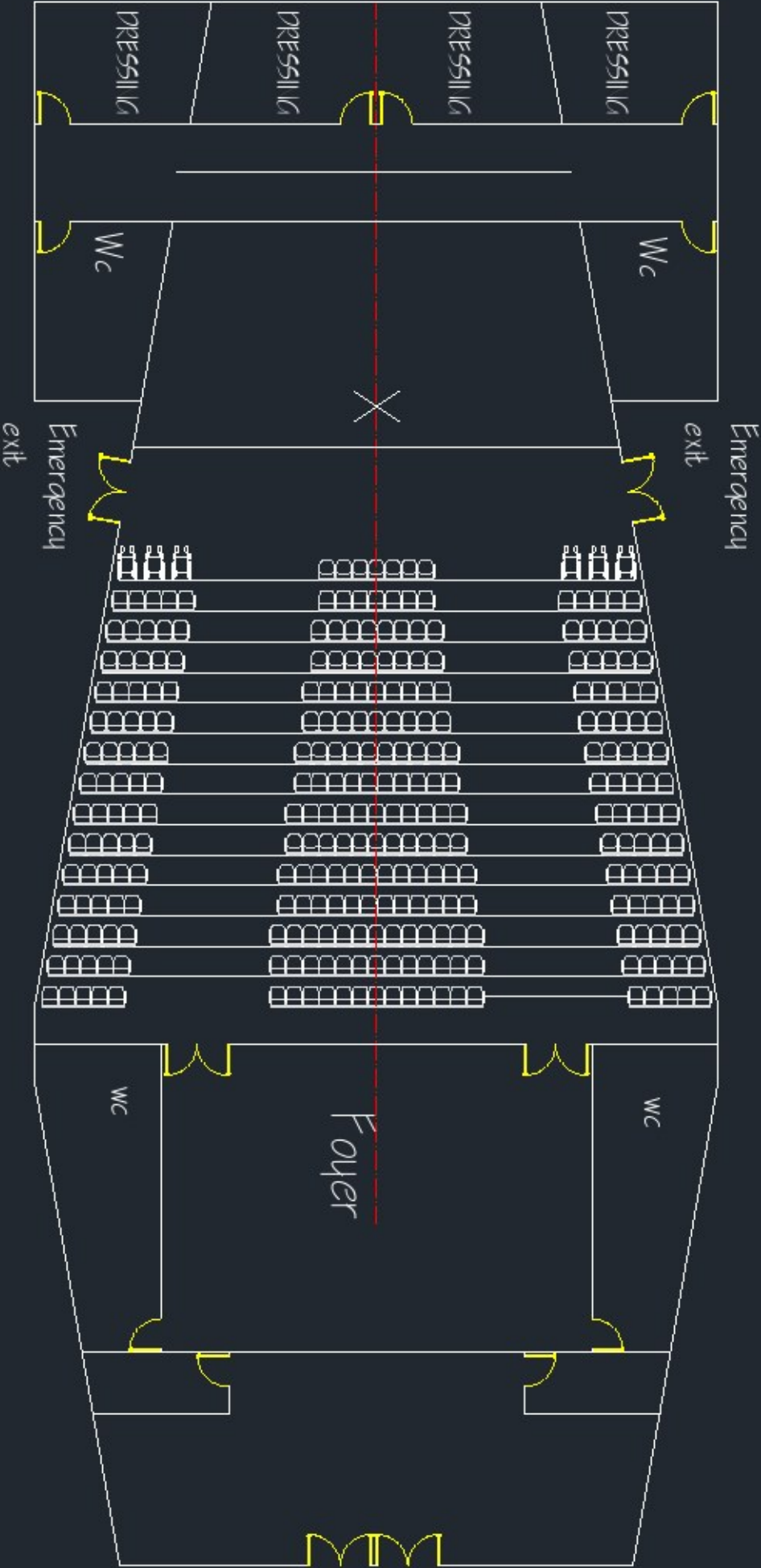
Scale: 1/100

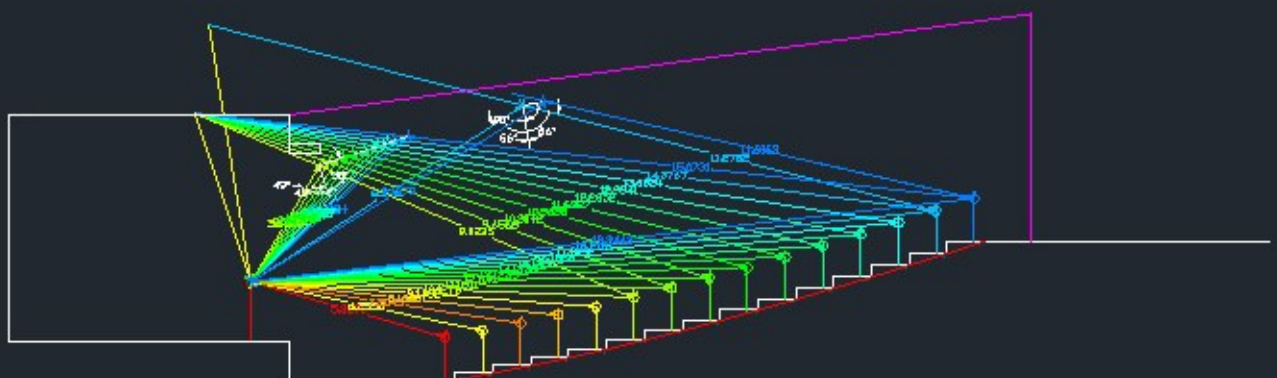
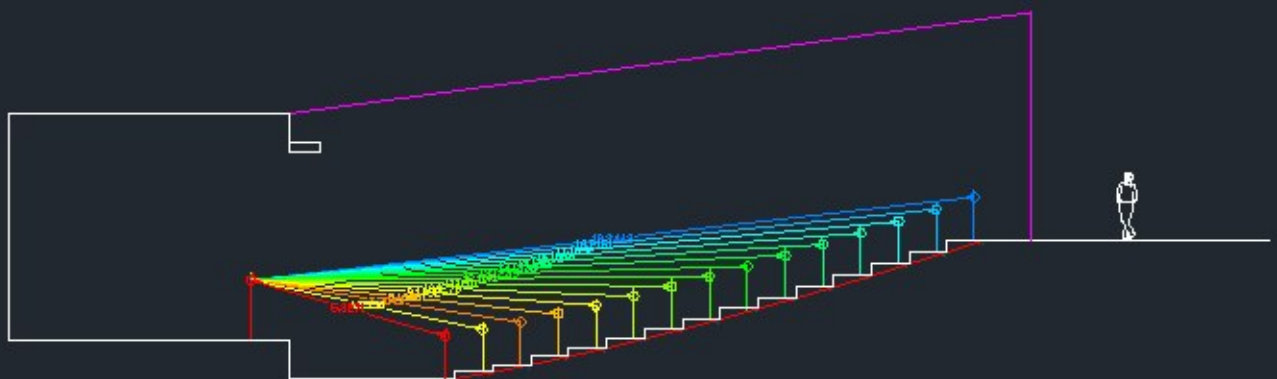
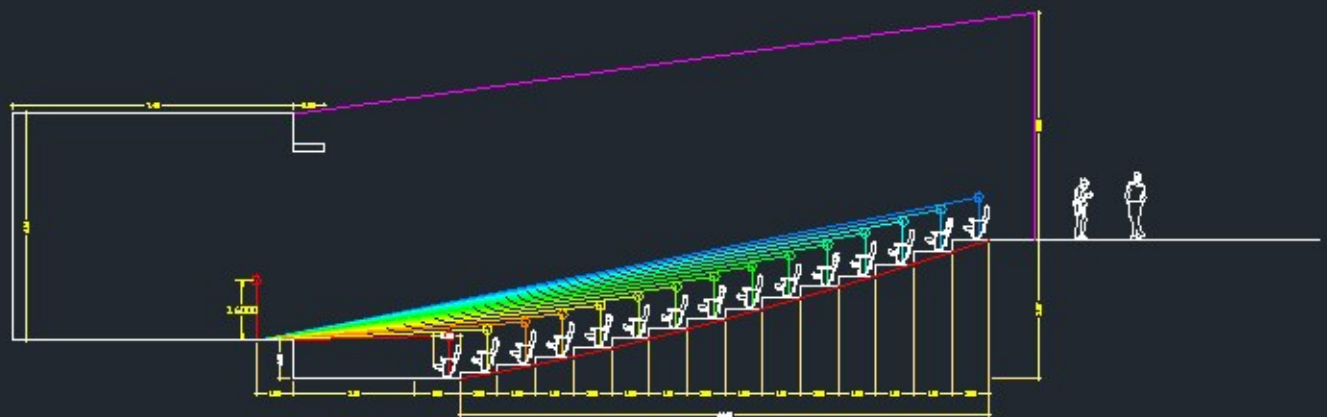


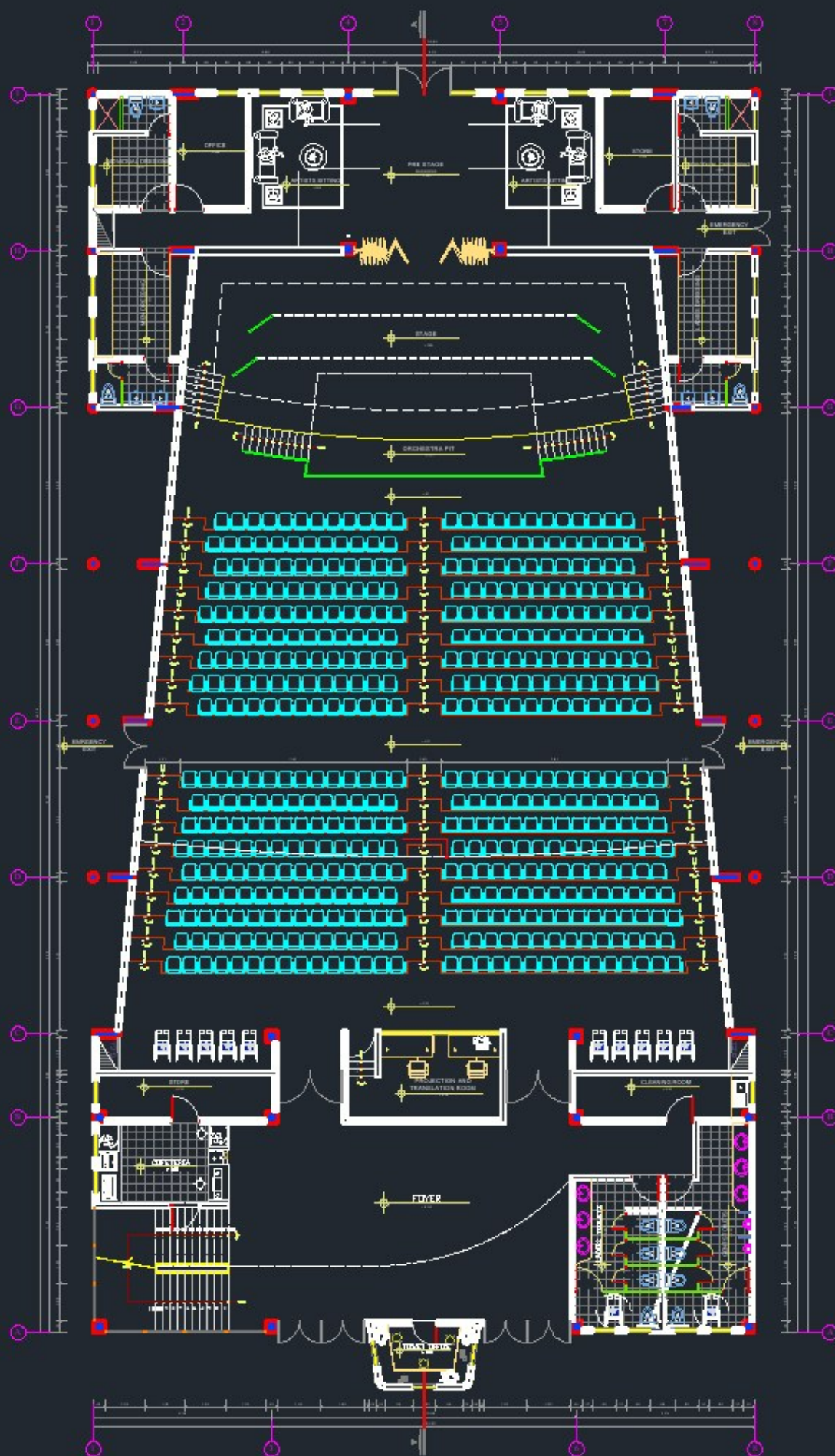
DETERMINING THE POINT WHERE
PANEL MUST BE LOCATED.

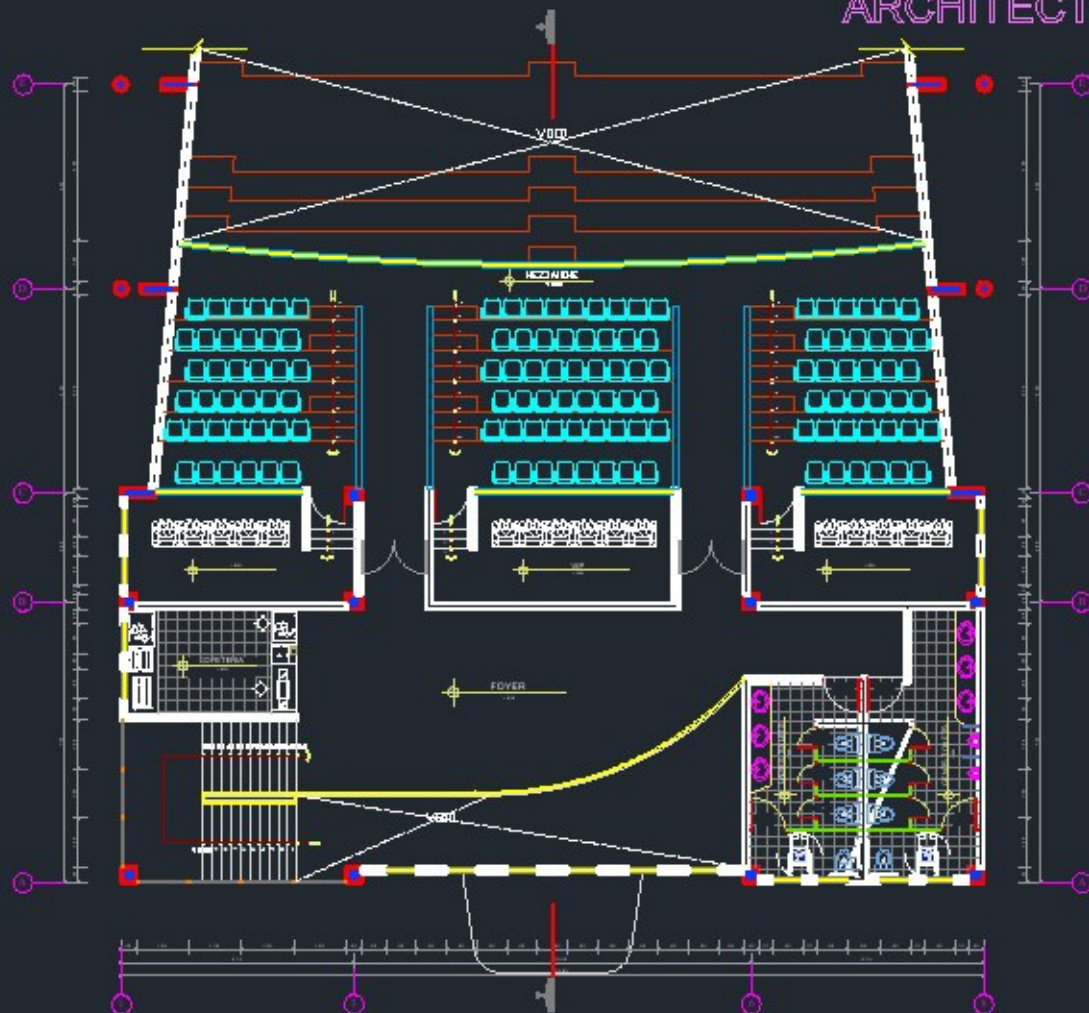


LOCATION OF ACOUSTIC PANELS



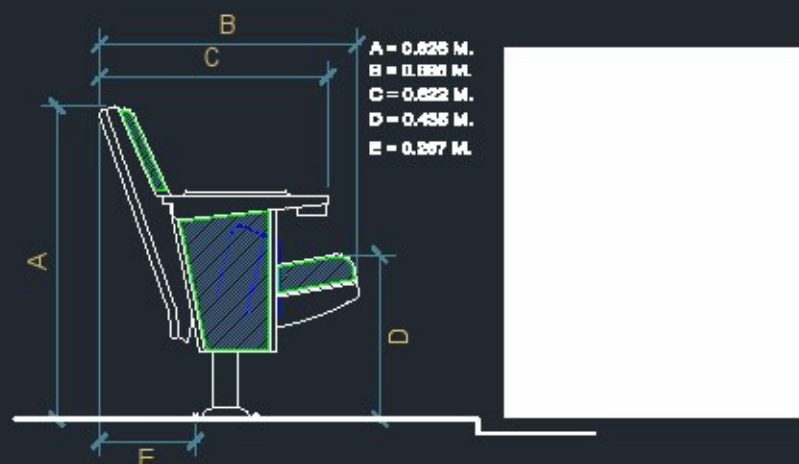






Scale: 1/100

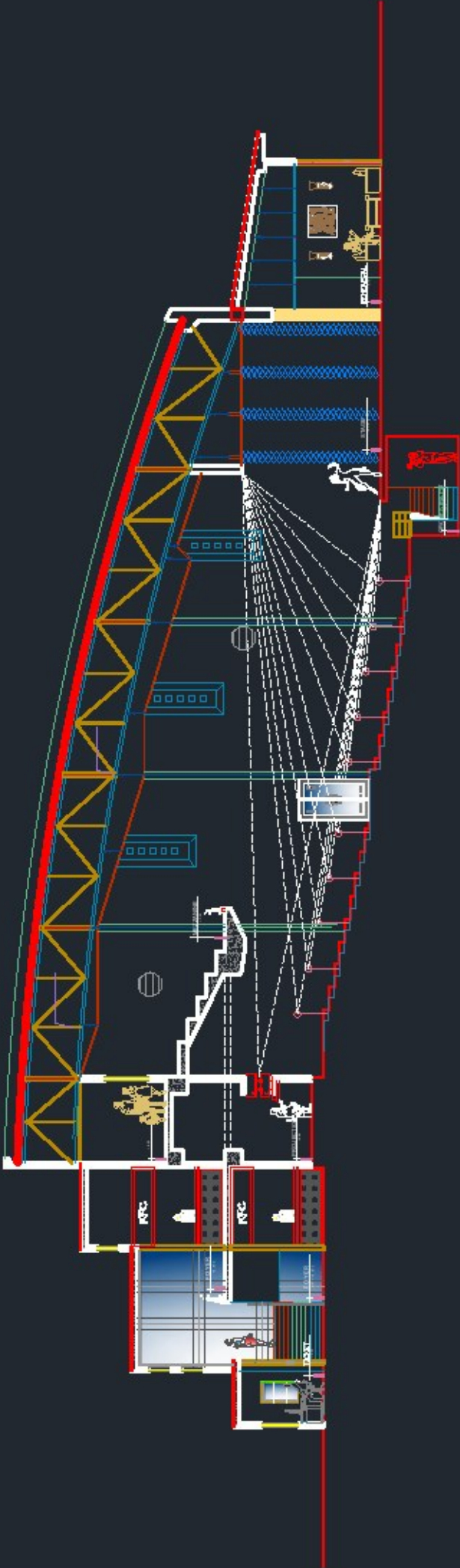
MEZZANINE Plan



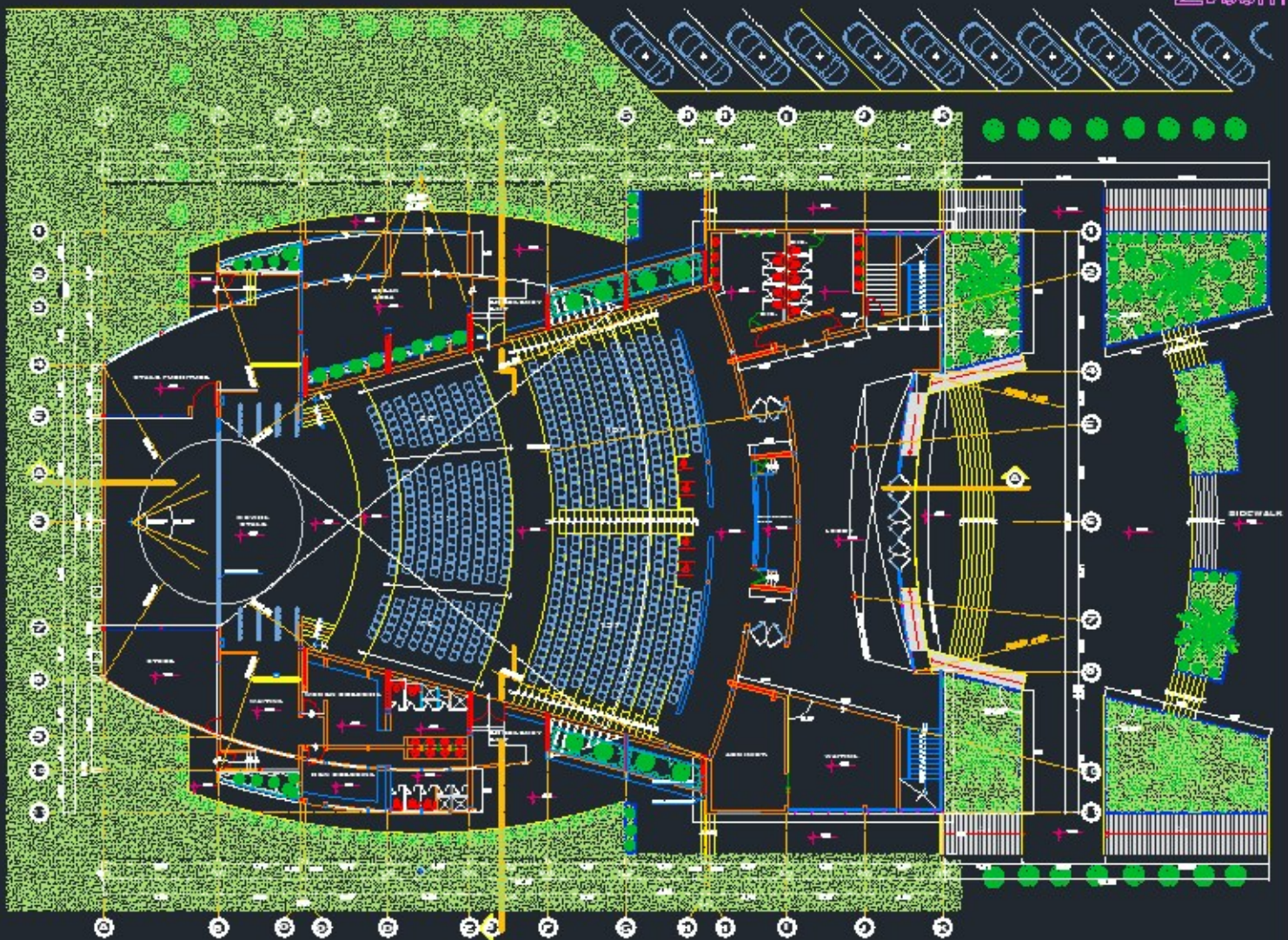
Scale: 1/10

SEATS

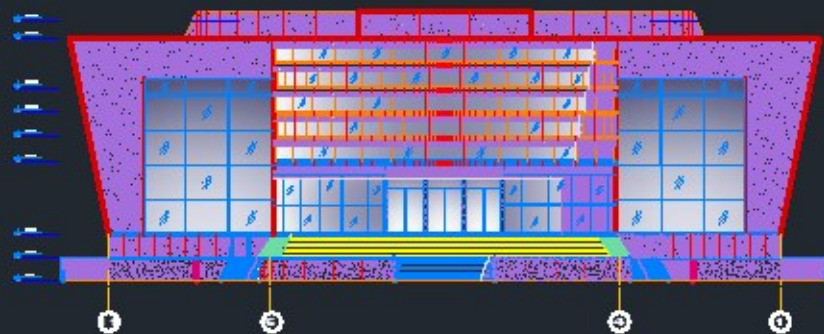
Project 1

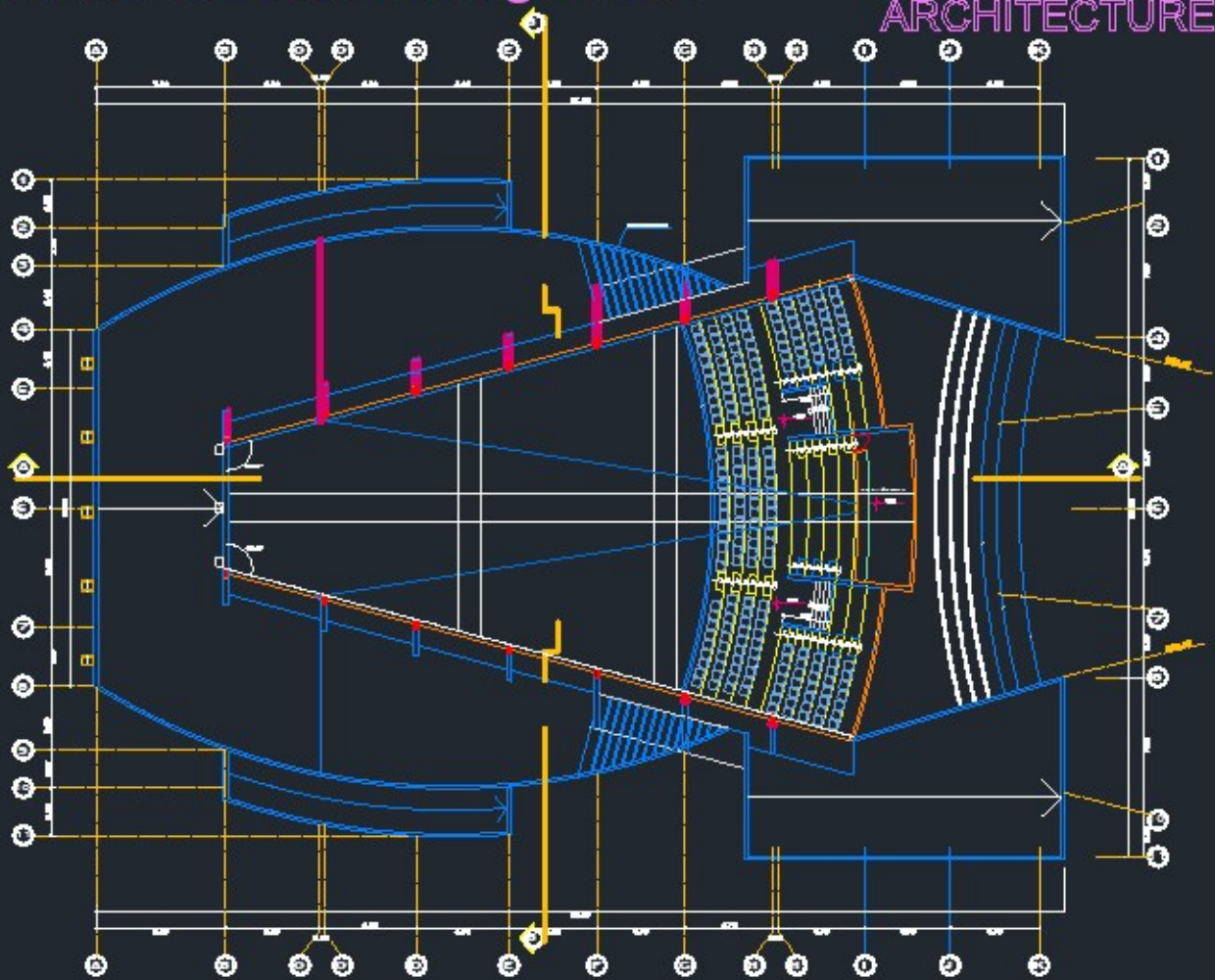


SECTION A-A

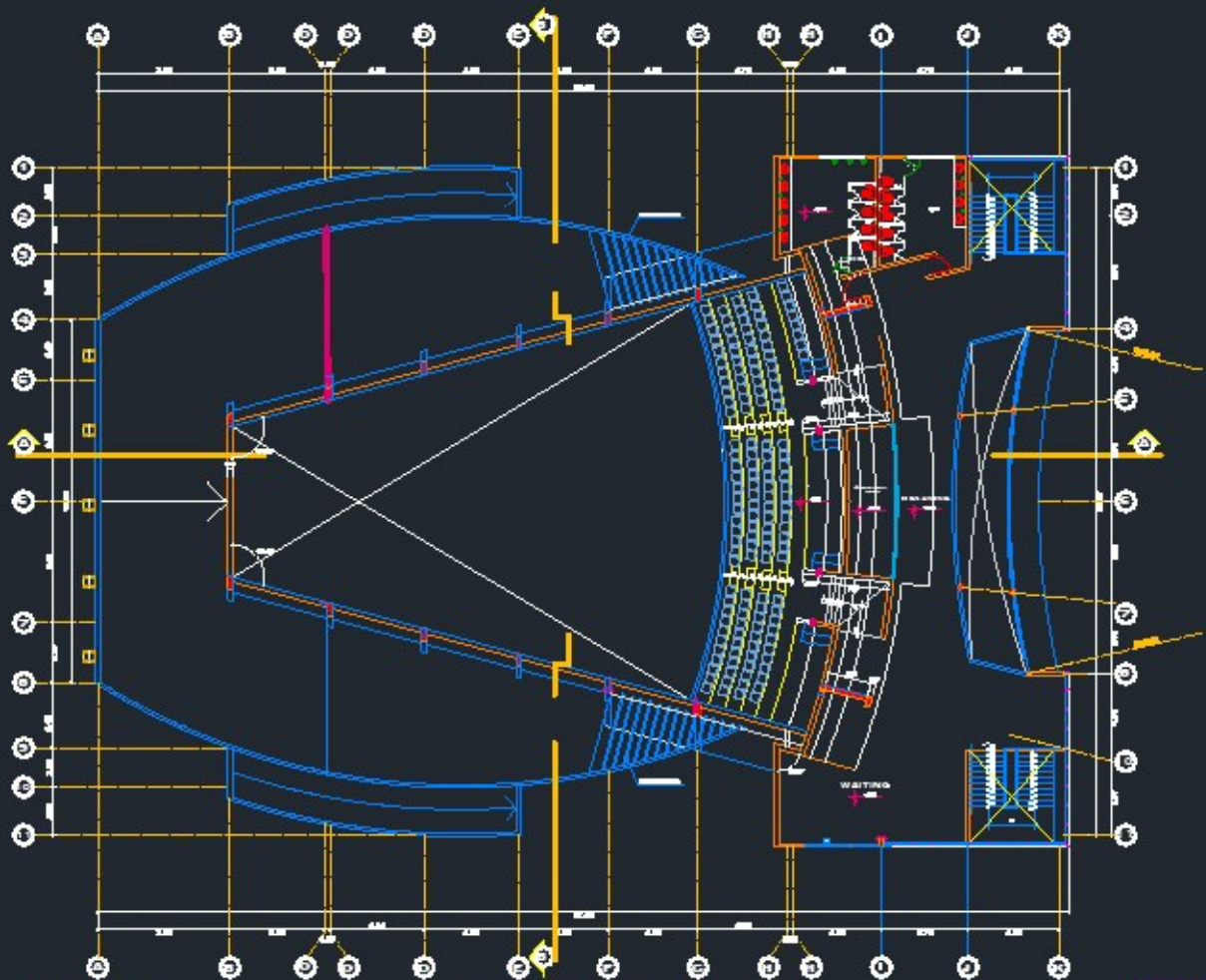


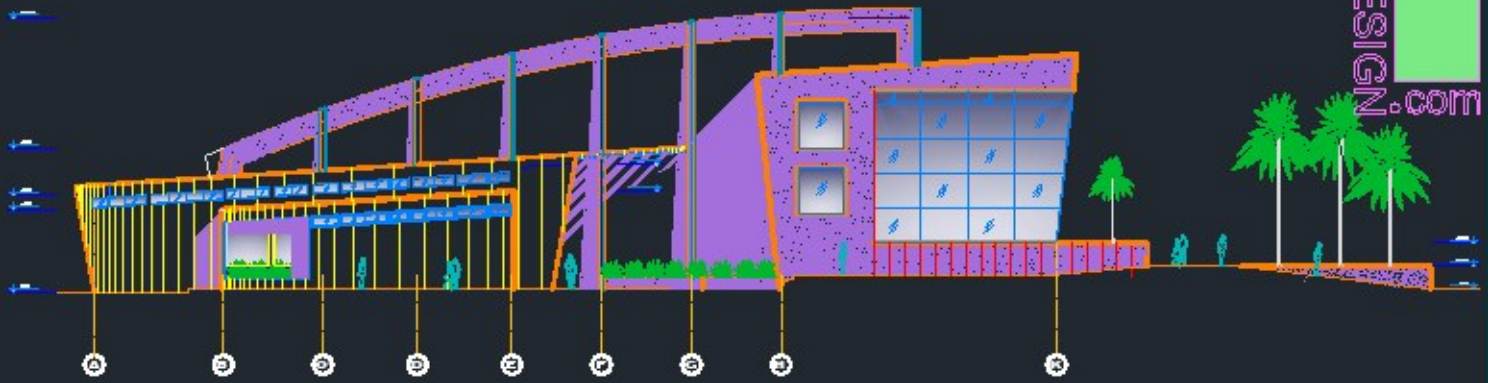
GROUND FLOOR PLAN



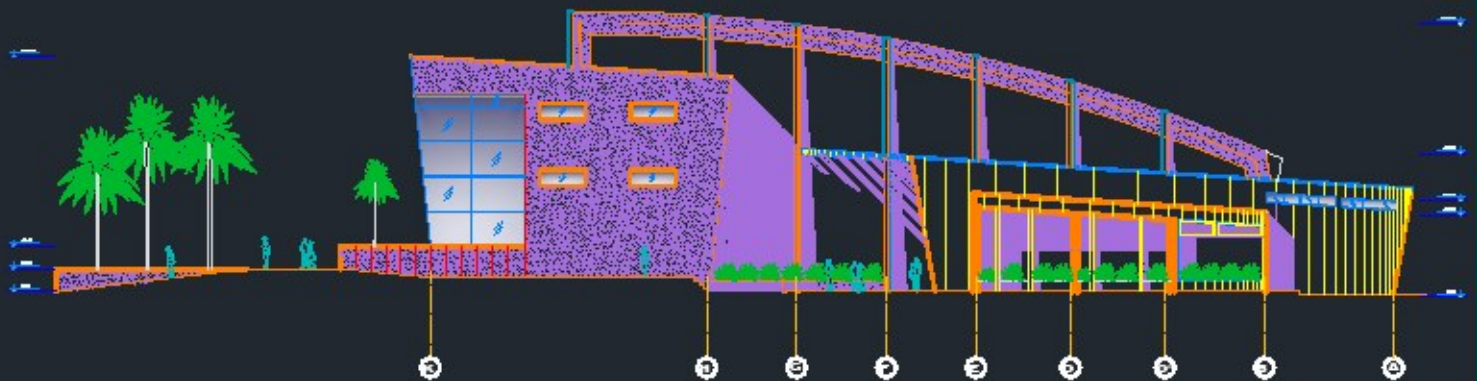


MEZZANINE PLAN





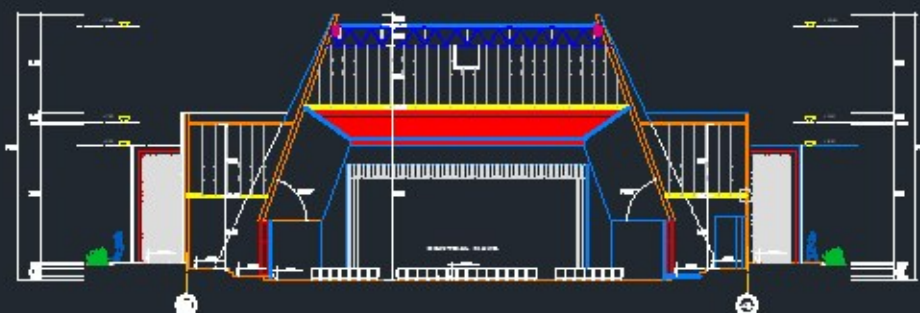
SIDE ELEVATION



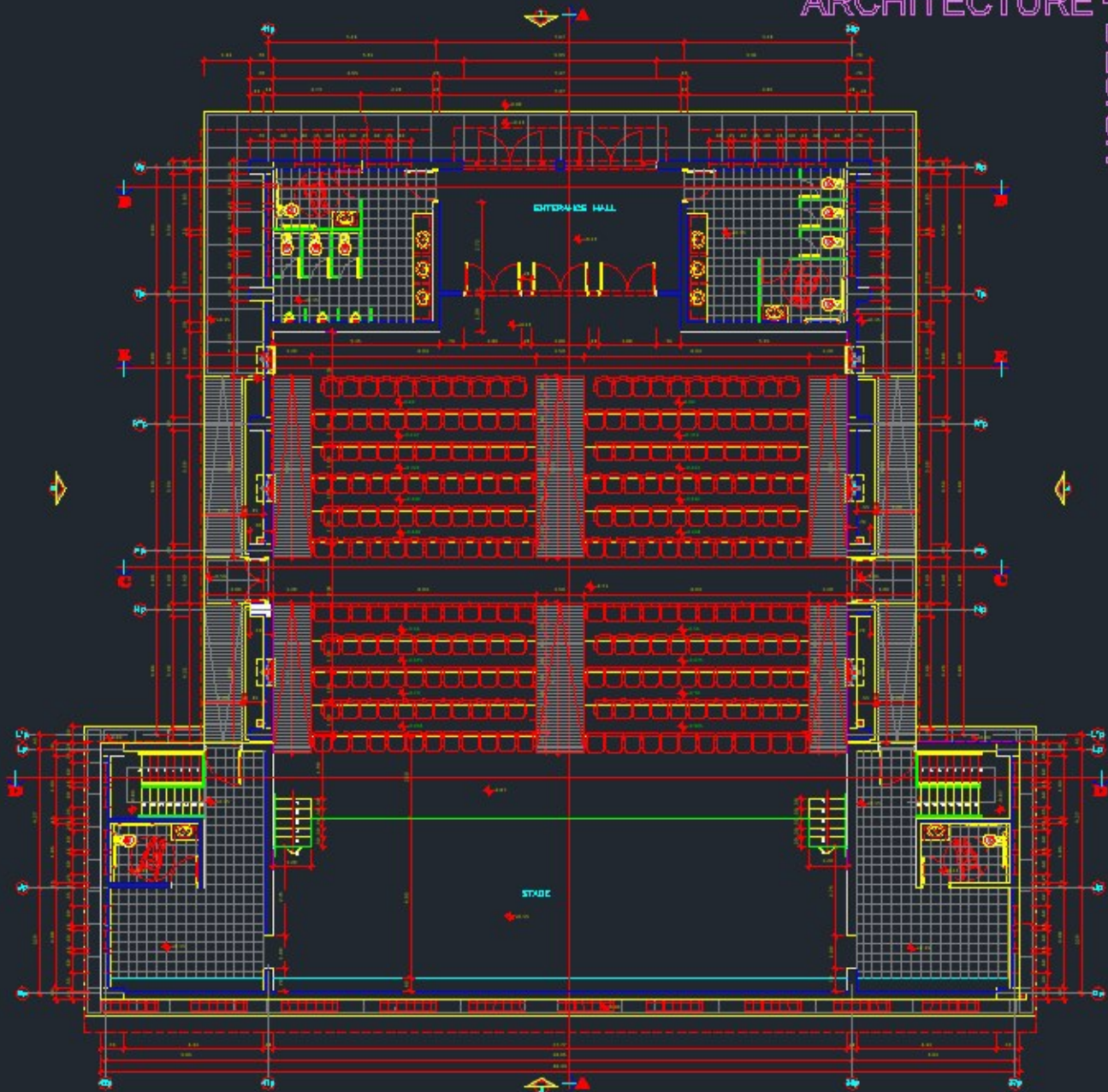
SIDE ELEVATION



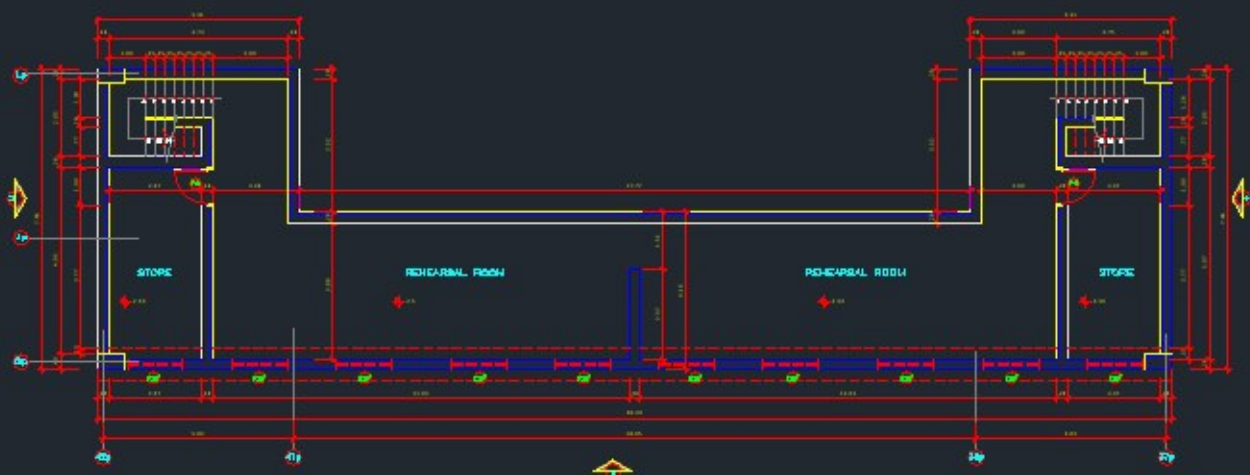
SECTION A-A



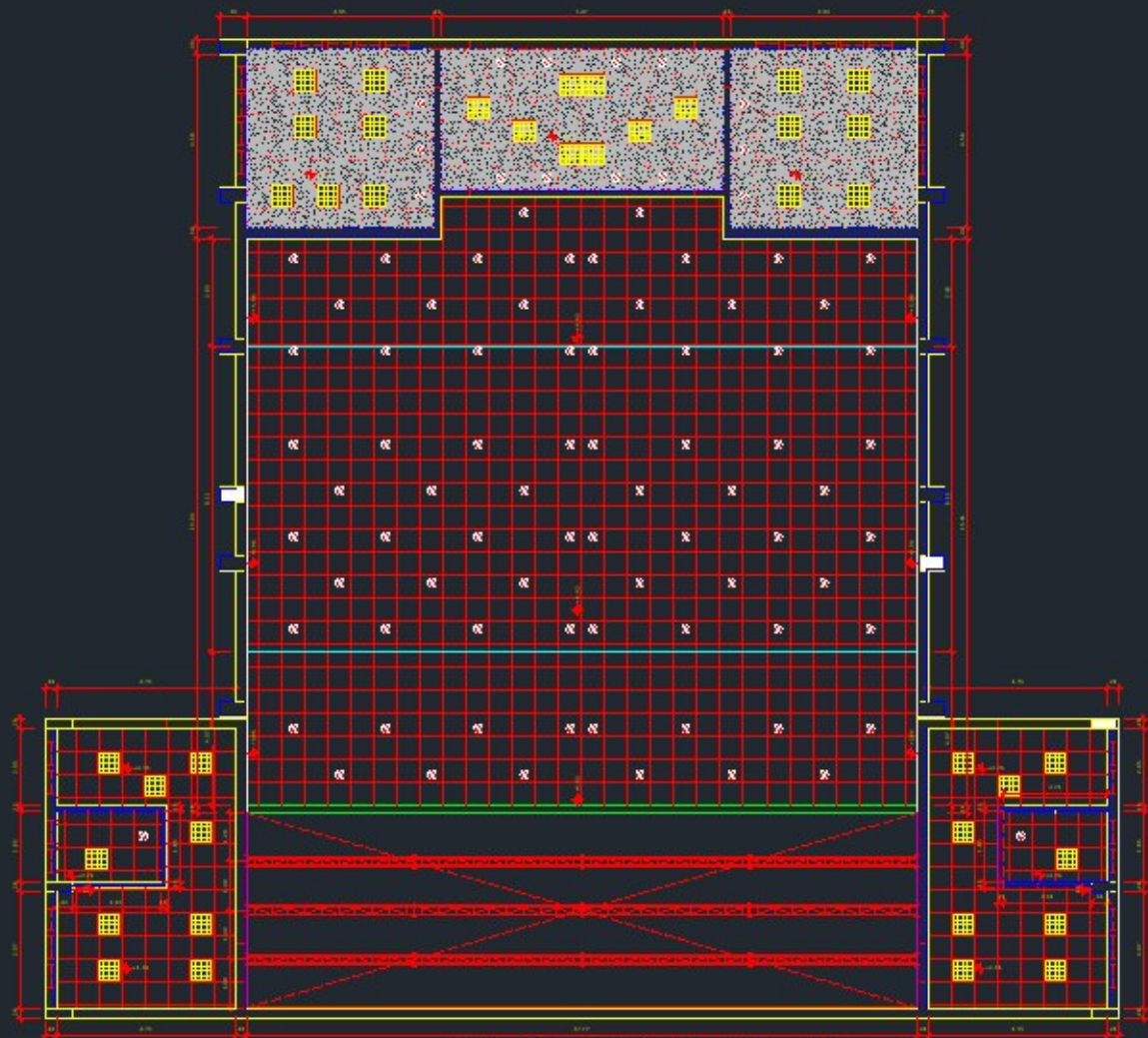
SECTION B-B



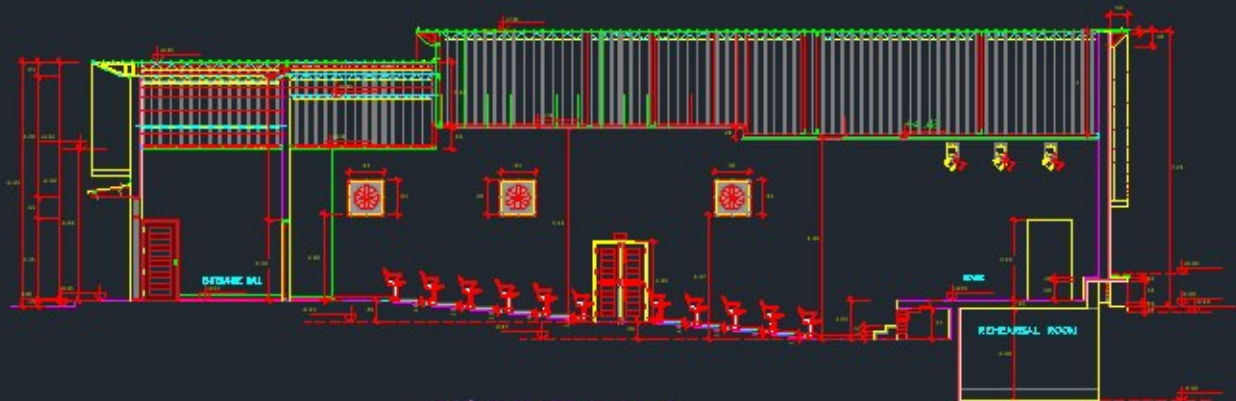
GROUND FLOOR



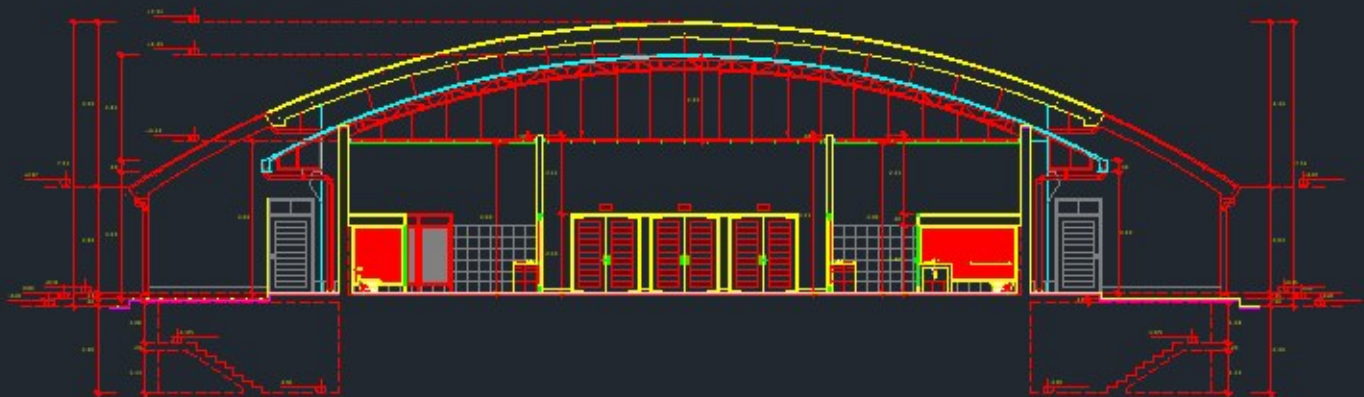
BASEMENT FLOOR



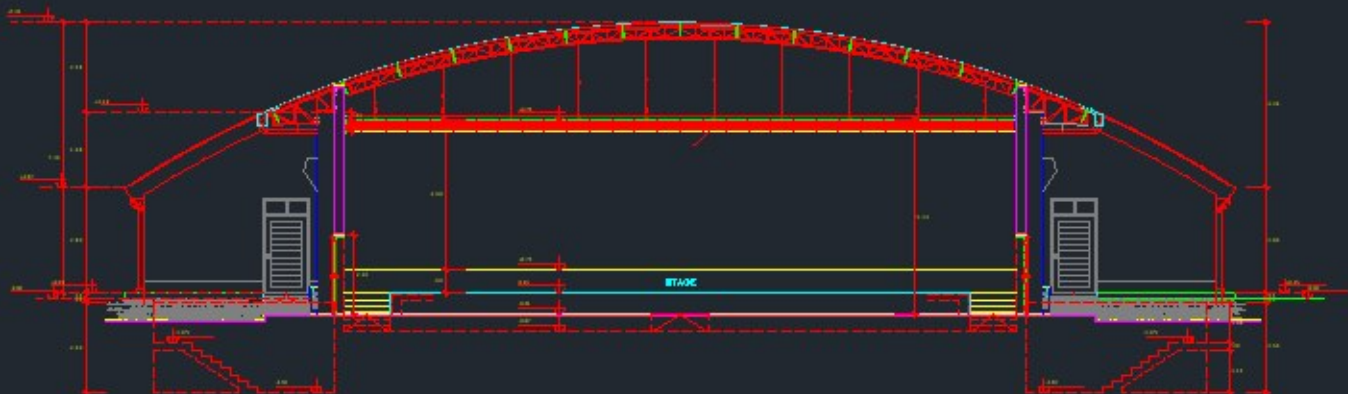
FALCE CAILING PLAN



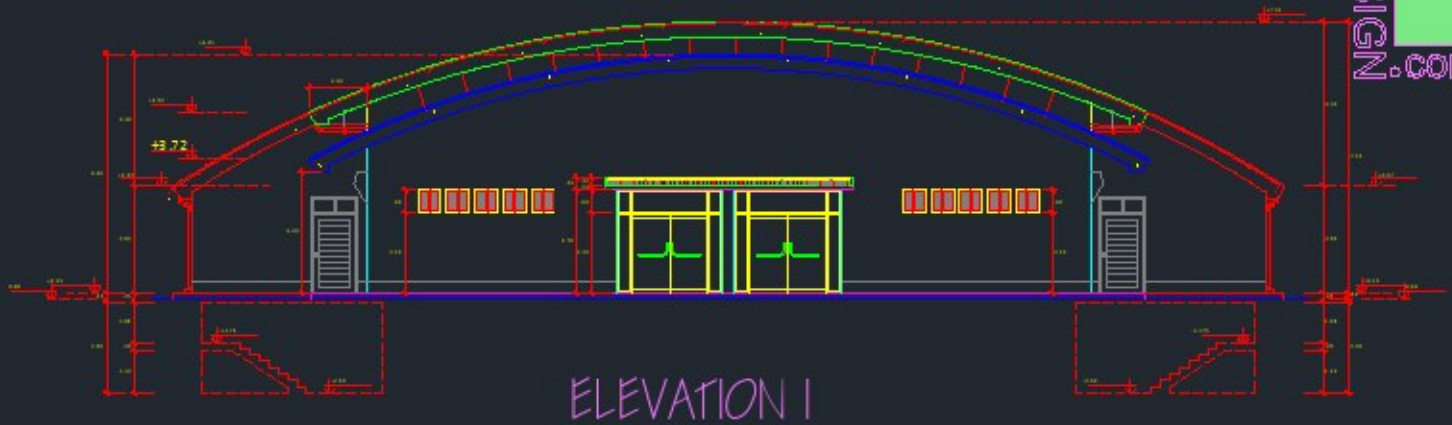
SECTION A-A



SECTION B-B



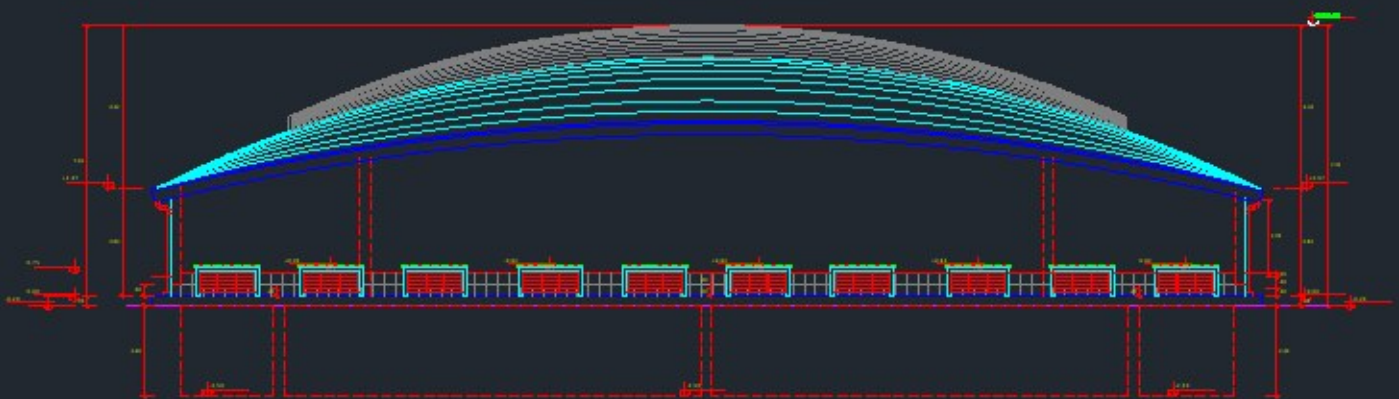
SECTION C-C



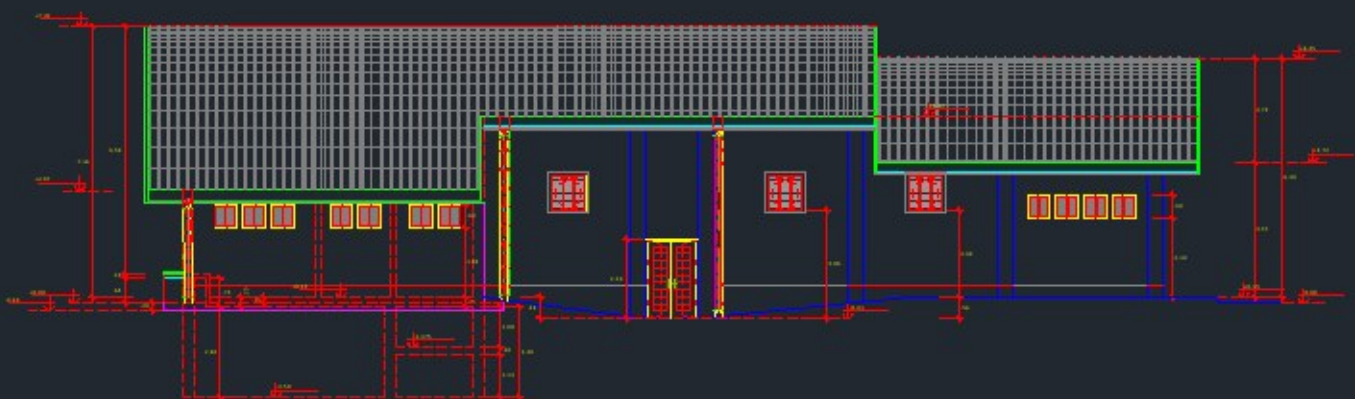
ELEVATION 1



ELEVATION 2

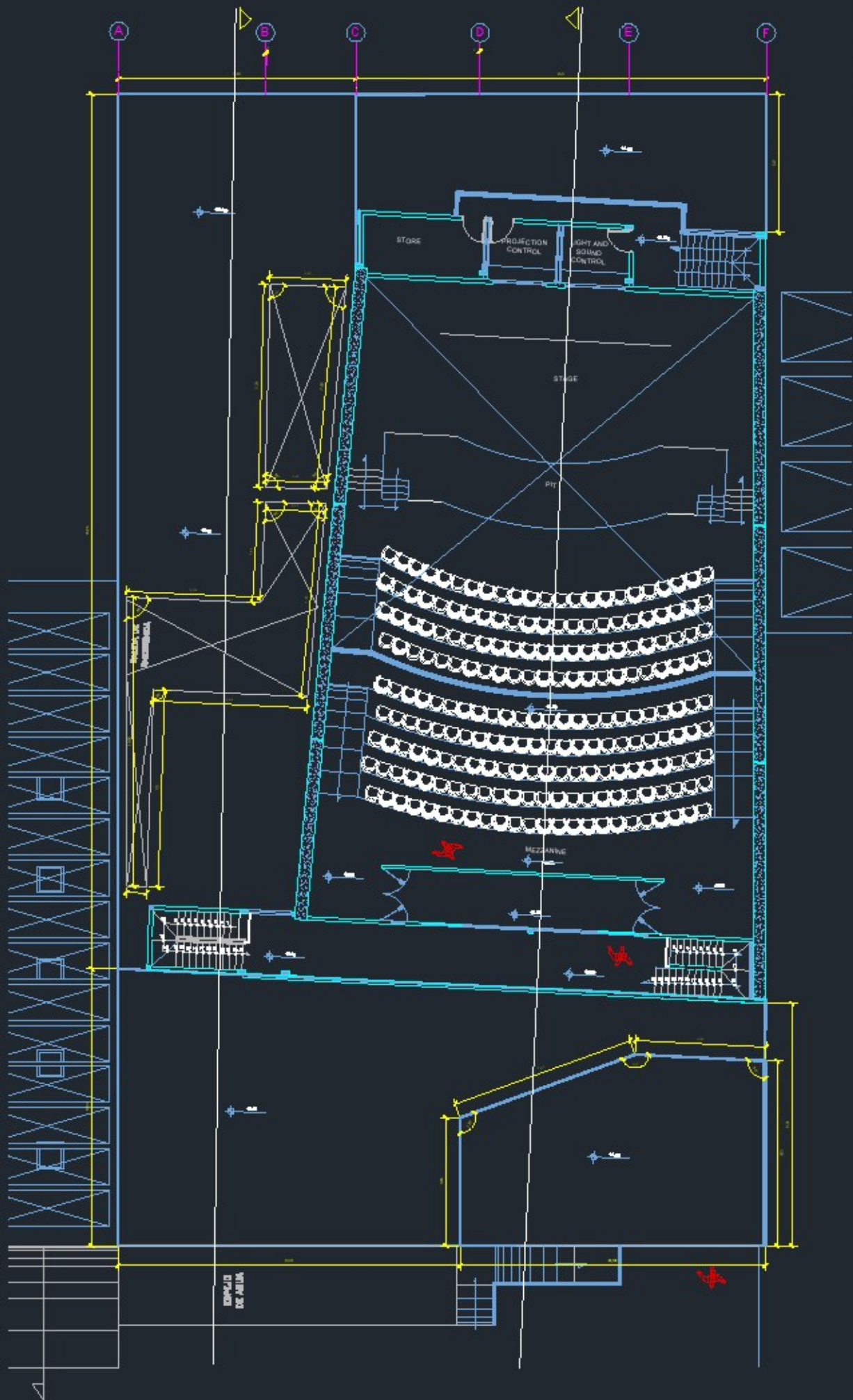


ELEVATION 3



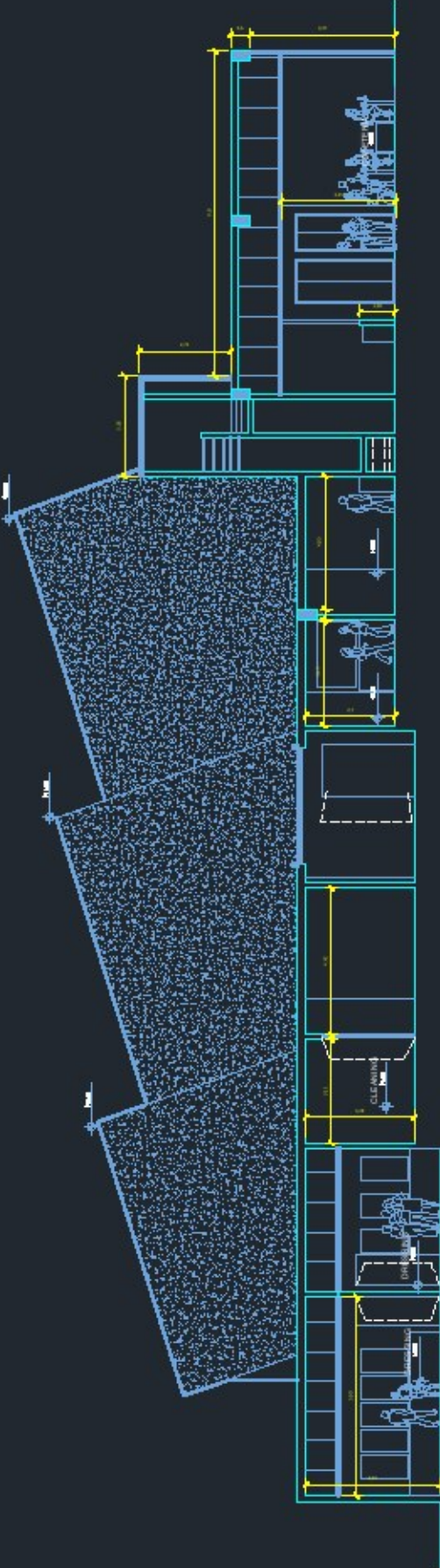
ELEVATION 4



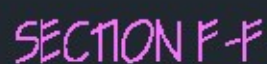




SECTION A-A

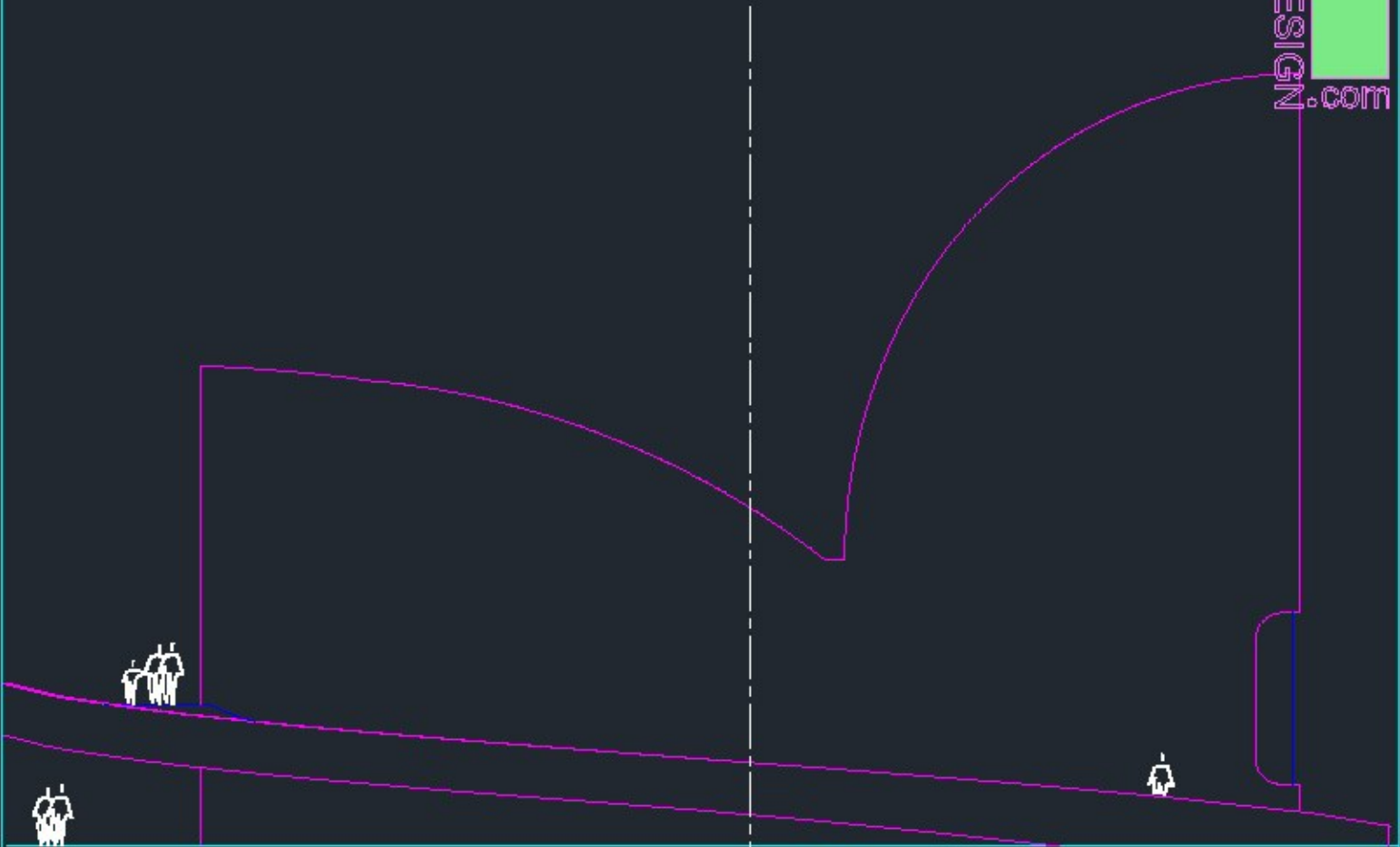


SECTION B-B

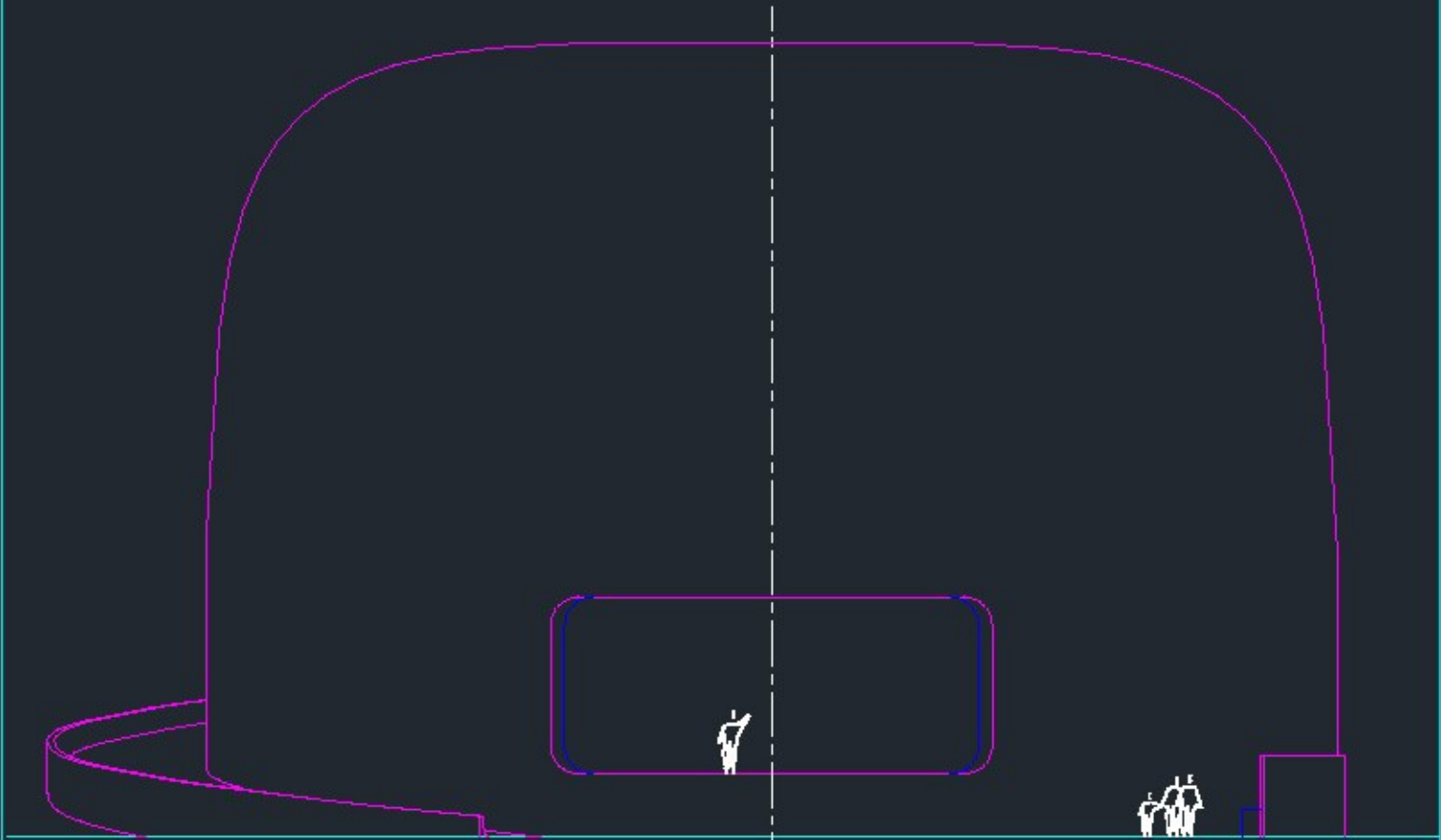








FACADE 1

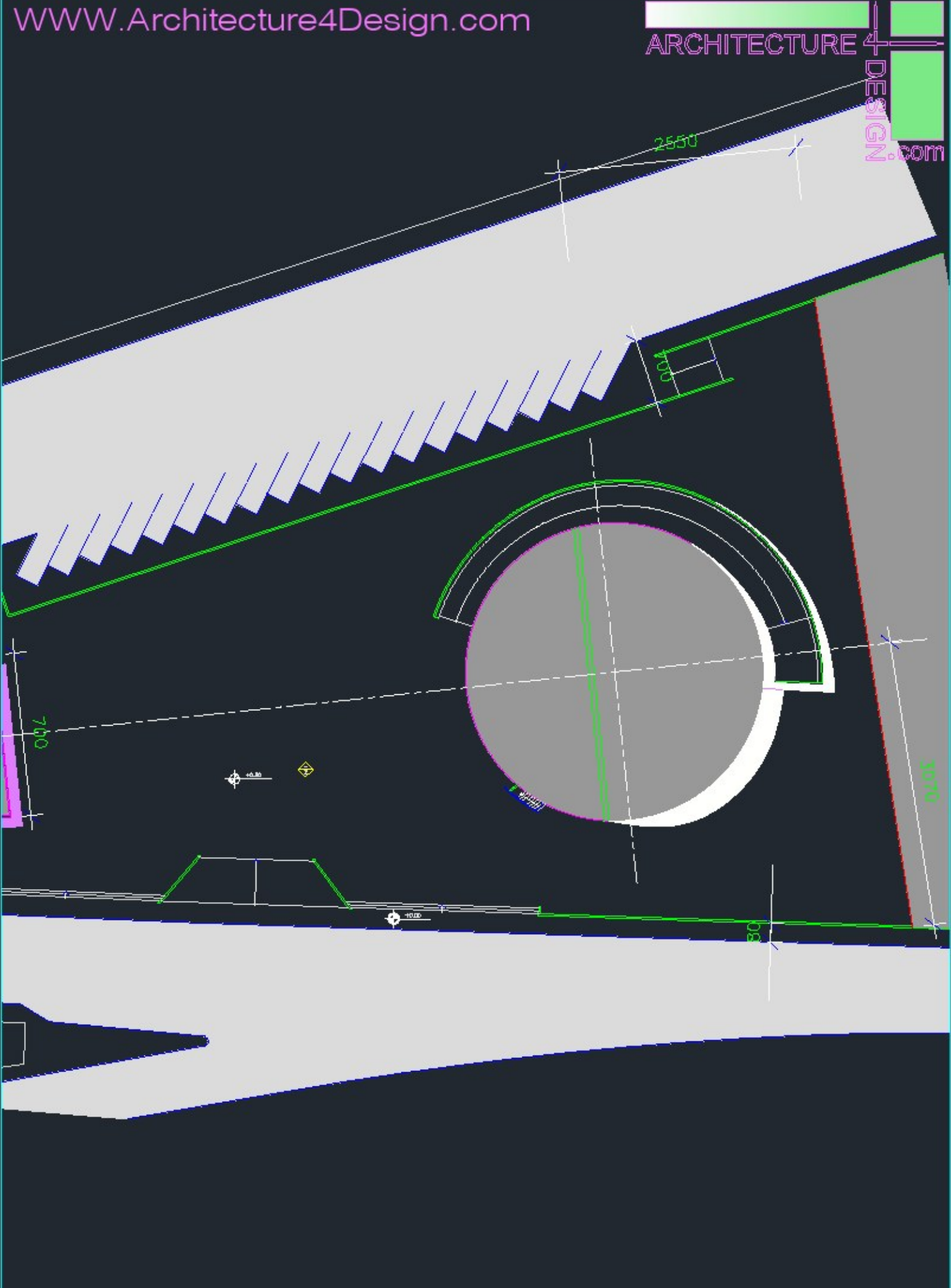


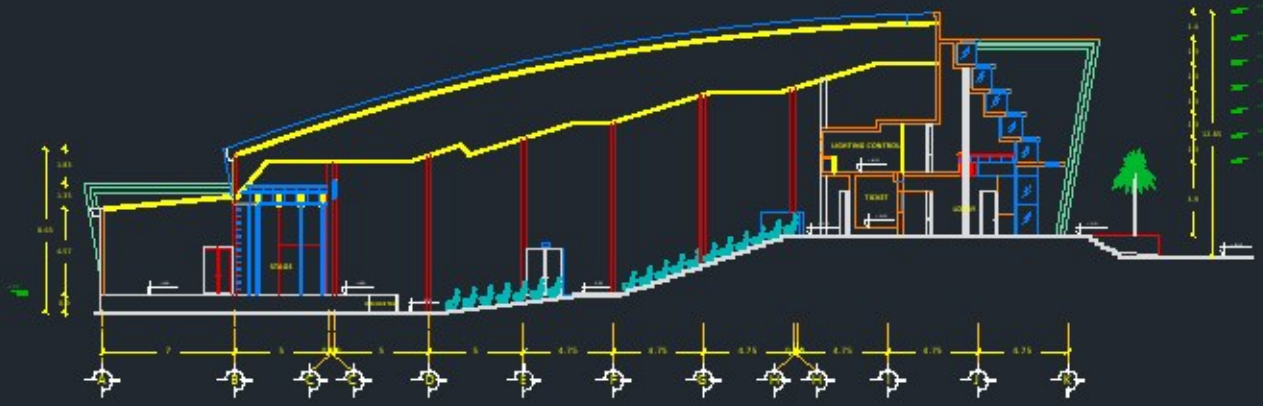
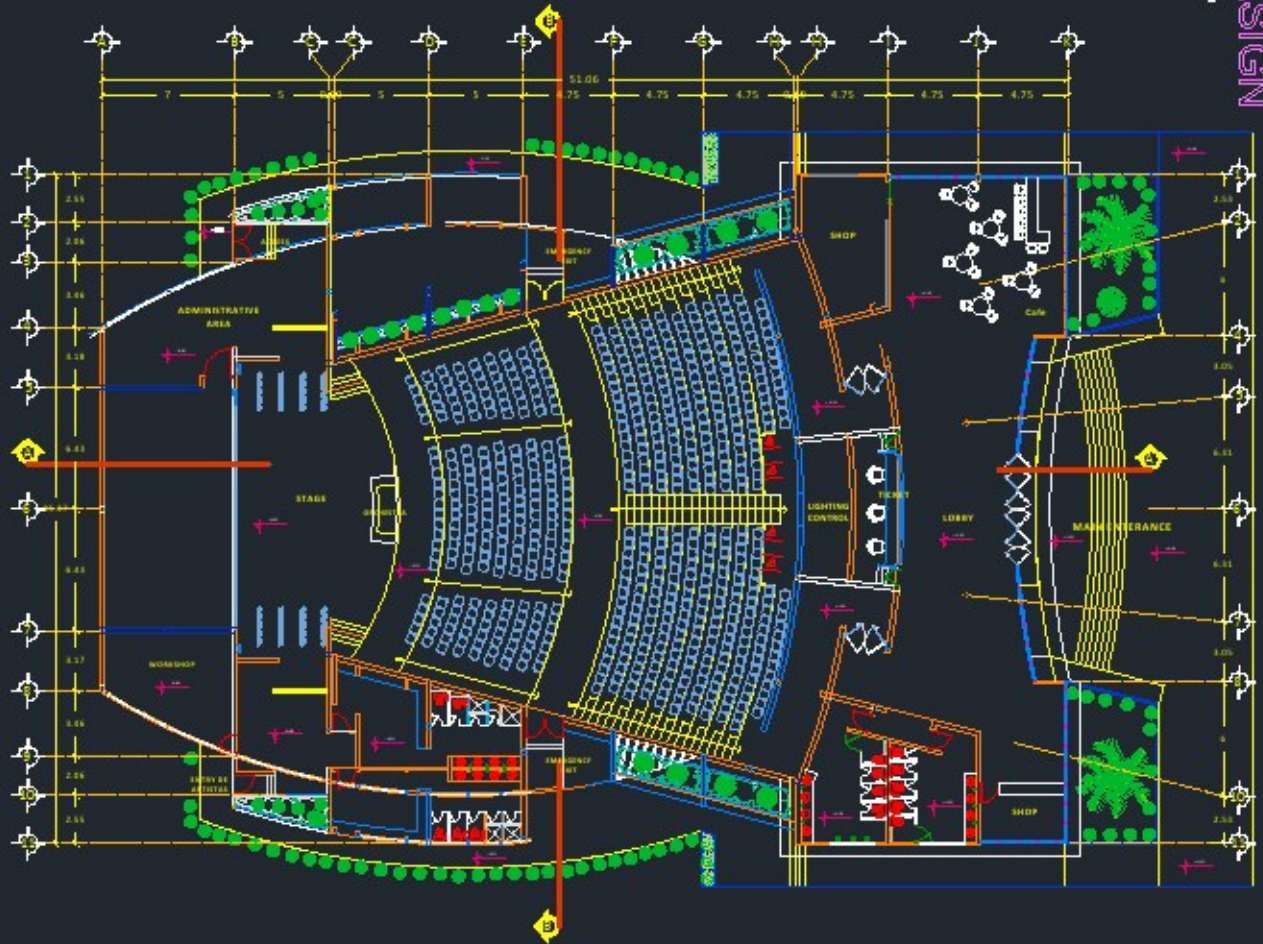
FACADE 2

Scale: 1/100

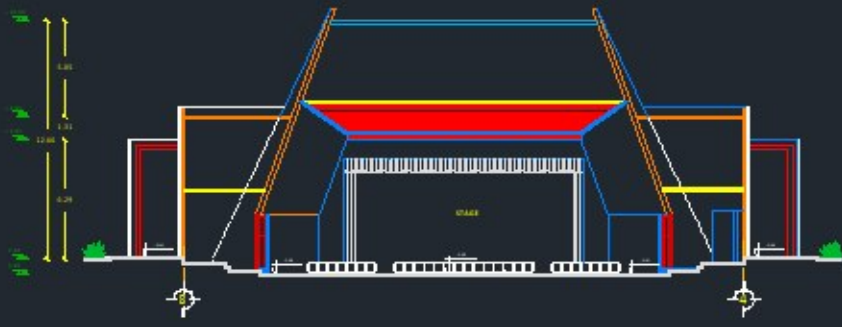
Project 5







longitudinal section

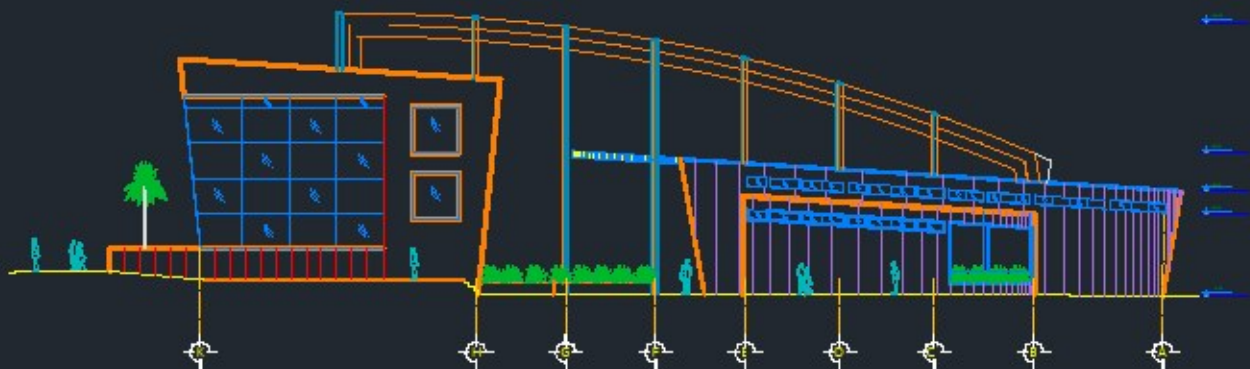


Cross section



Scale: 1/125

SITE PLAN



Scale: 1/100

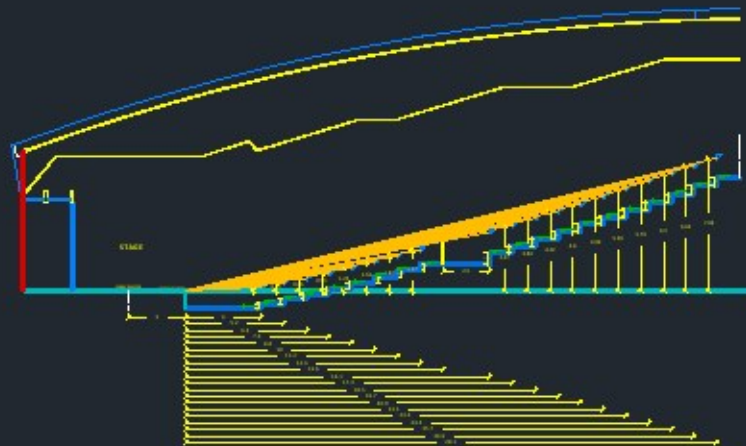
SIDE ELEVATION

Project 6

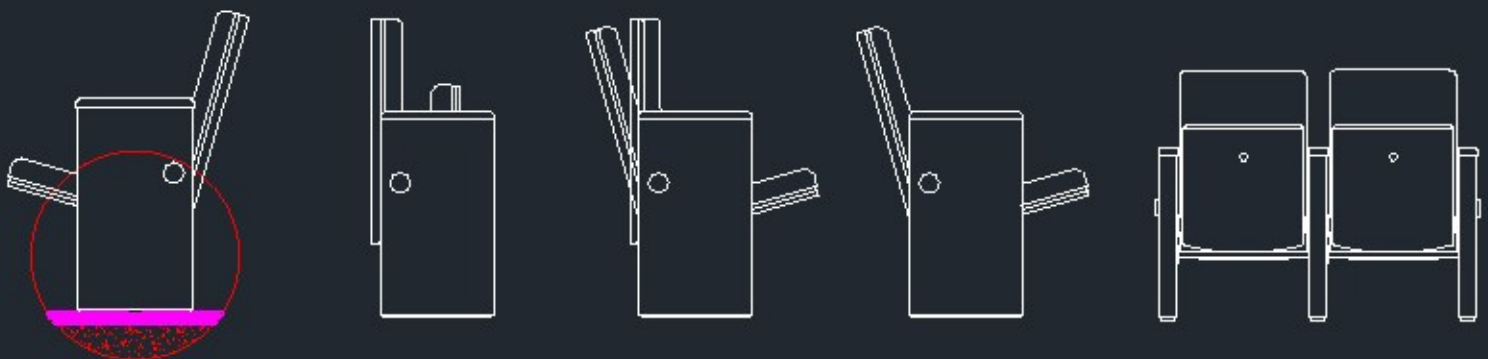


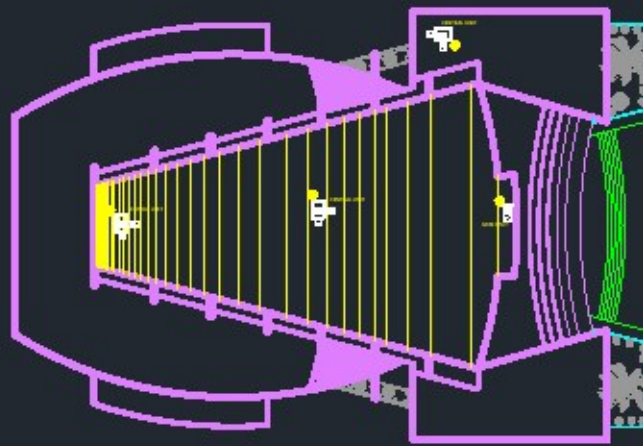
CALCULATION				
ROW NUMBER	R	S	SIZE OF ROW	SEAT
1st	4.00	0.20	0.20	0.20
2nd	5.12	0.22	0.22	0.22
3rd	6.44	0.24	0.24	0.24
4th	7.86	0.26	0.26	0.26
5th	9.48	0.28	0.28	0.28
6th	11.30	0.30	0.30	0.30
7th	13.32	0.32	0.32	0.32
8th	15.54	0.34	0.34	0.34
9th	17.96	0.36	0.36	0.36
10th	20.58	0.38	0.38	0.38
11th	23.40	0.40	0.40	0.40
12th	26.42	0.42	0.42	0.42
13th	29.64	0.44	0.44	0.44
14th	33.06	0.46	0.46	0.46
15th	36.68	0.48	0.48	0.48
16th	40.50	0.50	0.50	0.50
17th	44.52	0.52	0.52	0.52
18th	48.74	0.54	0.54	0.54
19th	53.16	0.56	0.56	0.56
20th	57.78	0.58	0.58	0.58
21st	62.60	0.60	0.60	0.60
22nd	67.62	0.62	0.62	0.62
23rd	72.84	0.64	0.64	0.64
24th	78.26	0.66	0.66	0.66
25th	83.88	0.68	0.68	0.68
26th	89.70	0.70	0.70	0.70
27th	95.72	0.72	0.72	0.72
28th	101.94	0.74	0.74	0.74
29th	108.36	0.76	0.76	0.76
30th	115.00	0.78	0.78	0.78
31st	121.86	0.80	0.80	0.80
32nd	128.94	0.82	0.82	0.82
33rd	136.24	0.84	0.84	0.84
34th	143.76	0.86	0.86	0.86
35th	151.50	0.88	0.88	0.88
36th	159.46	0.90	0.90	0.90
37th	167.64	0.92	0.92	0.92
38th	176.04	0.94	0.94	0.94
39th	184.66	0.96	0.96	0.96
40th	193.50	0.98	0.98	0.98
41st	202.56	1.00	1.00	1.00

CALCULATION TABLE

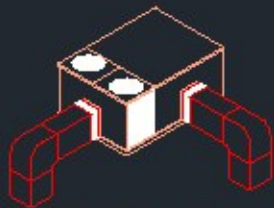


ROWS RISERS CALCULATION





AIR CONDITIONING EQUIPMENTS



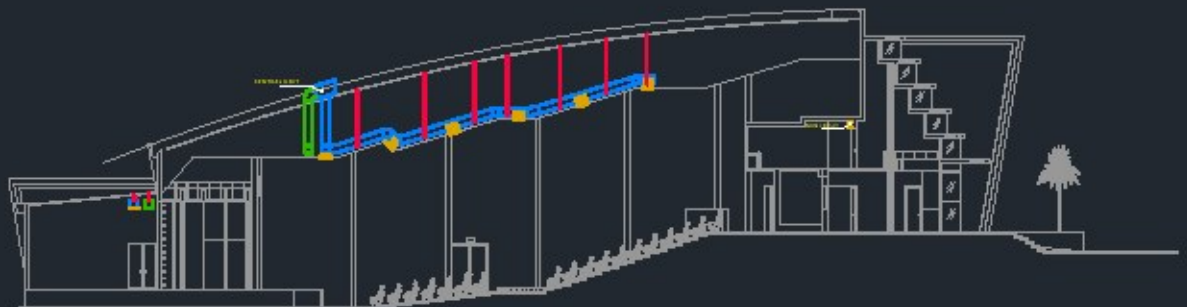
CENTRAL UNIT

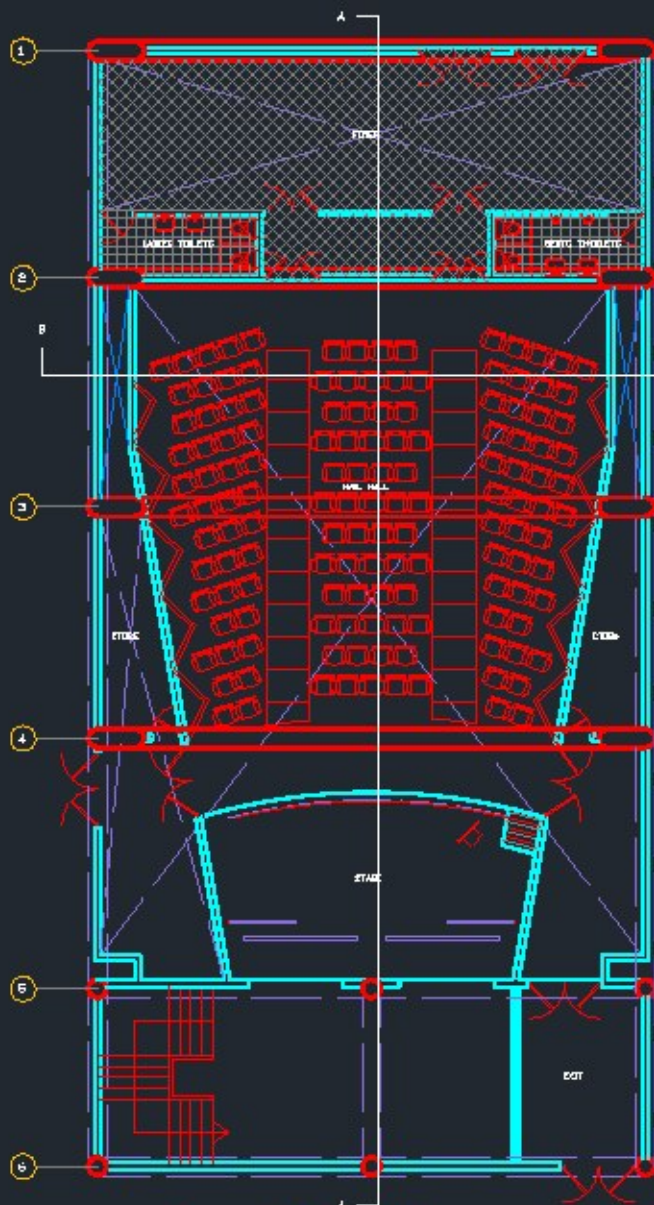


MINISPLIT

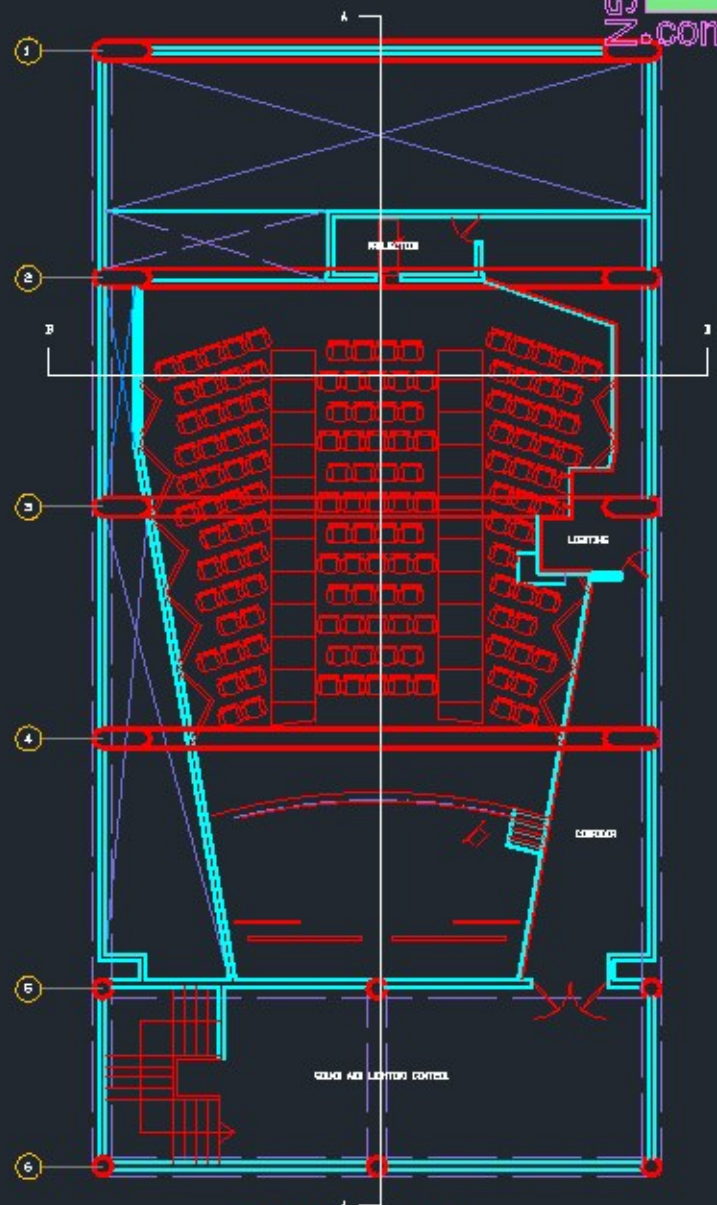


DUCTS DISTRIBUTION

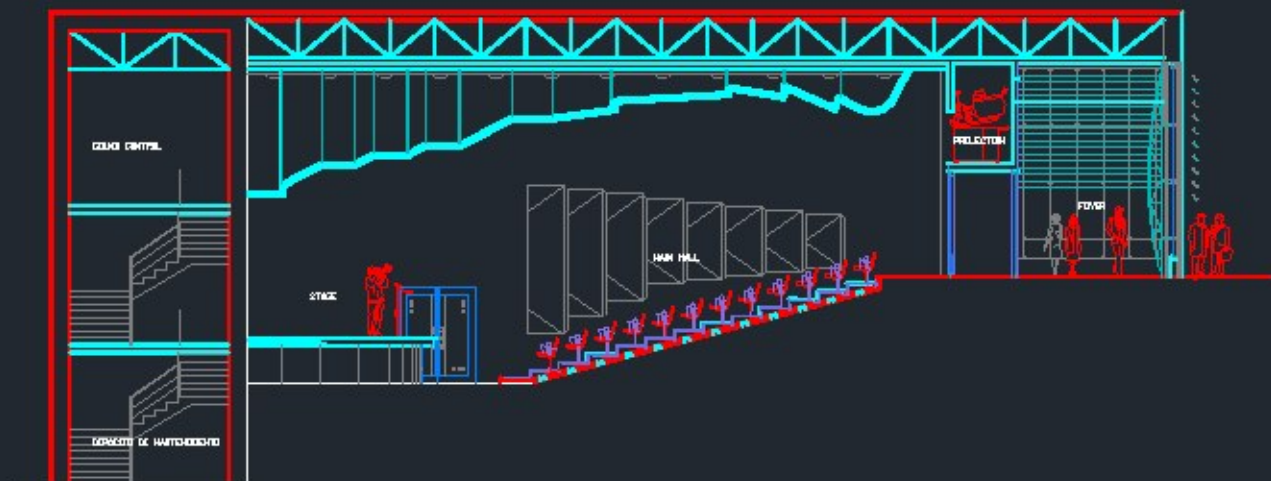


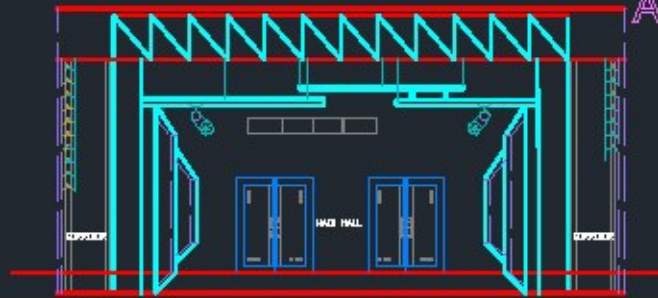


Ground Floor Plan



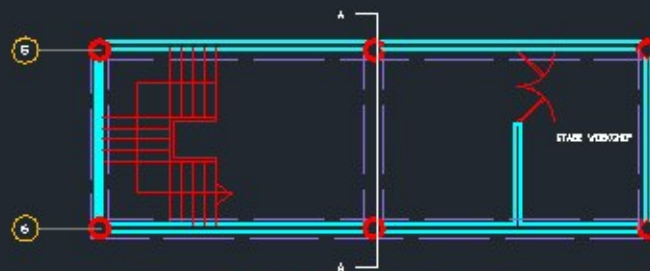
TOP Floor Plan





Scale: 1/100

SECTION B - B



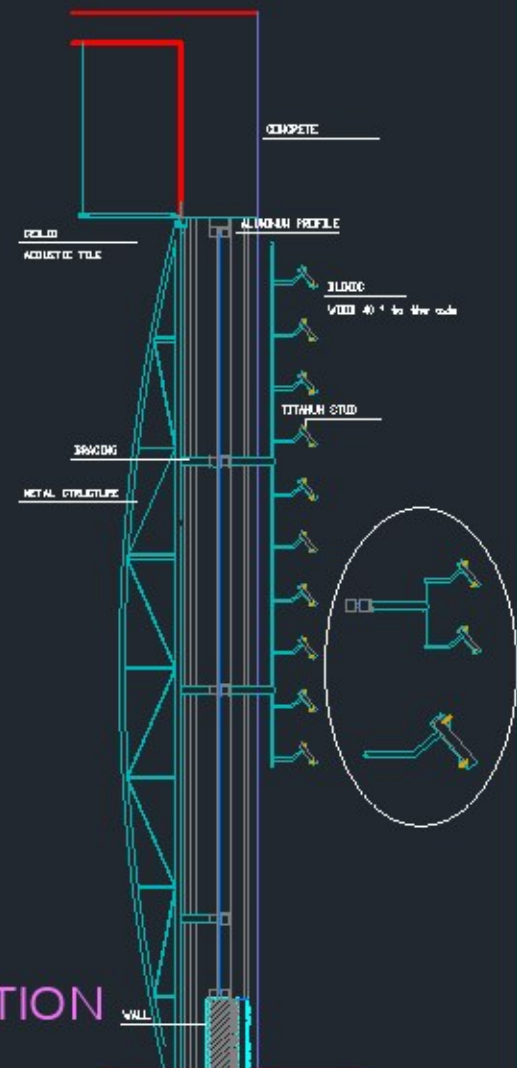
Scale: 1/100

BASMENT PLAN



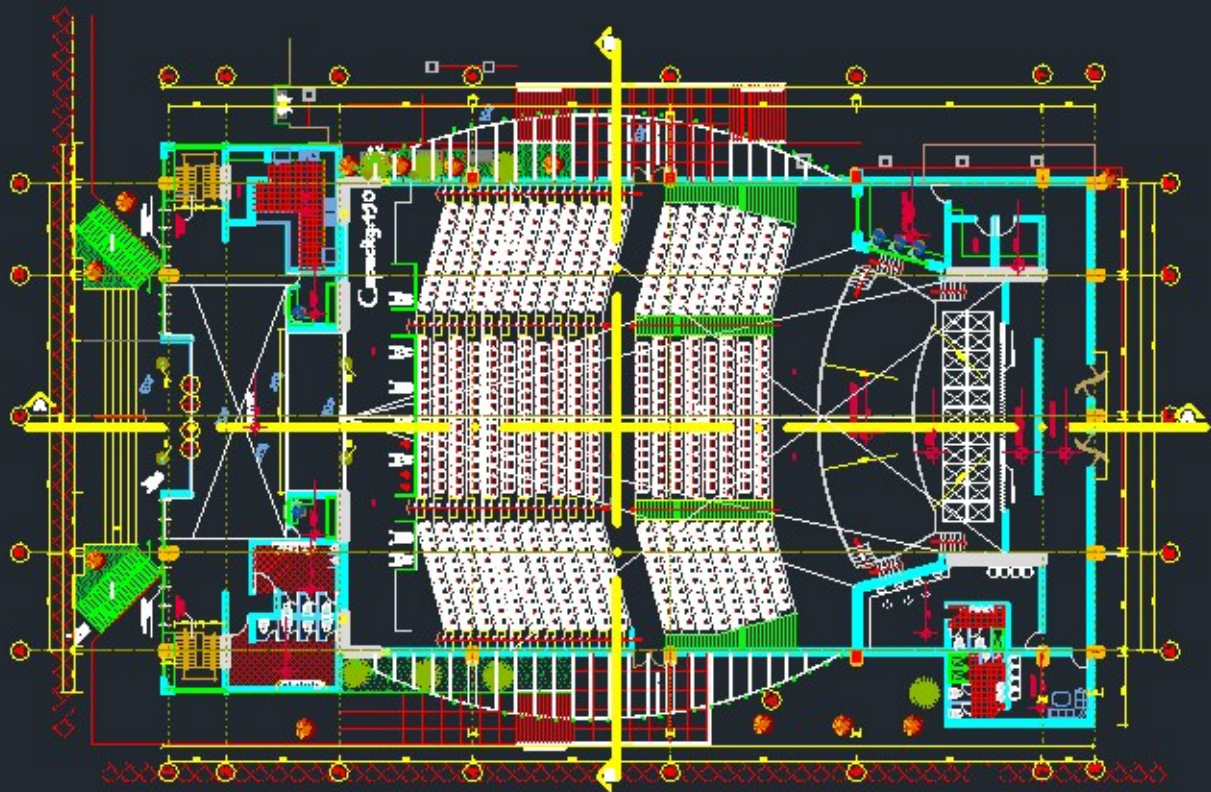
SEATS DETAIL

Scale: 1/10

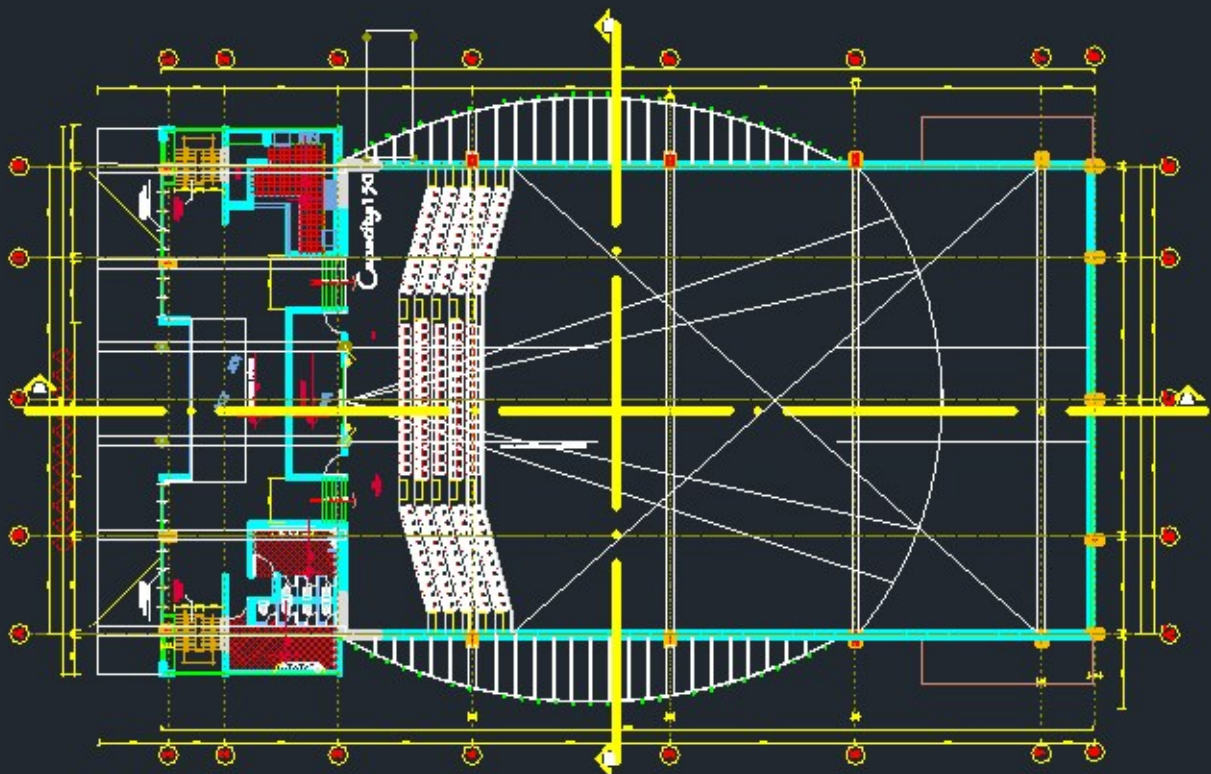


FOYER WALL SECTION

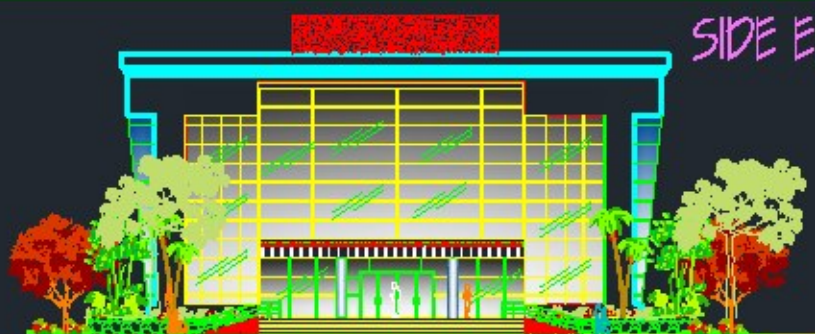
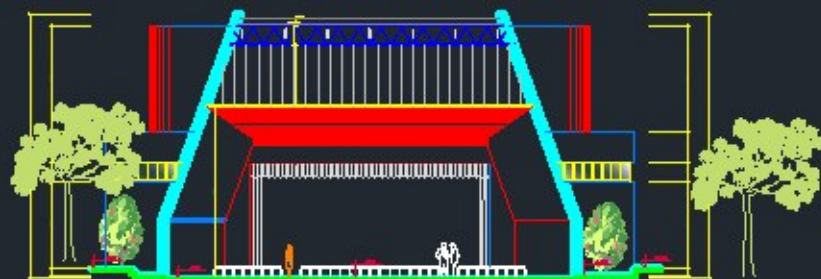
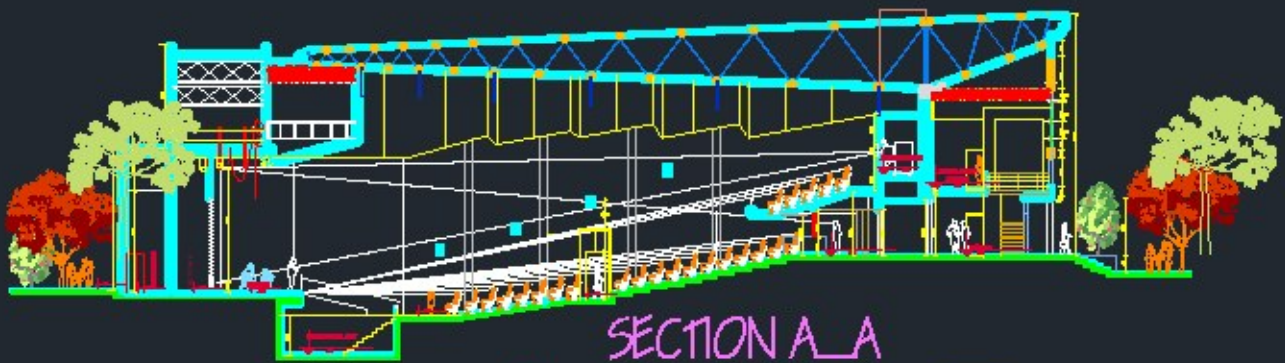
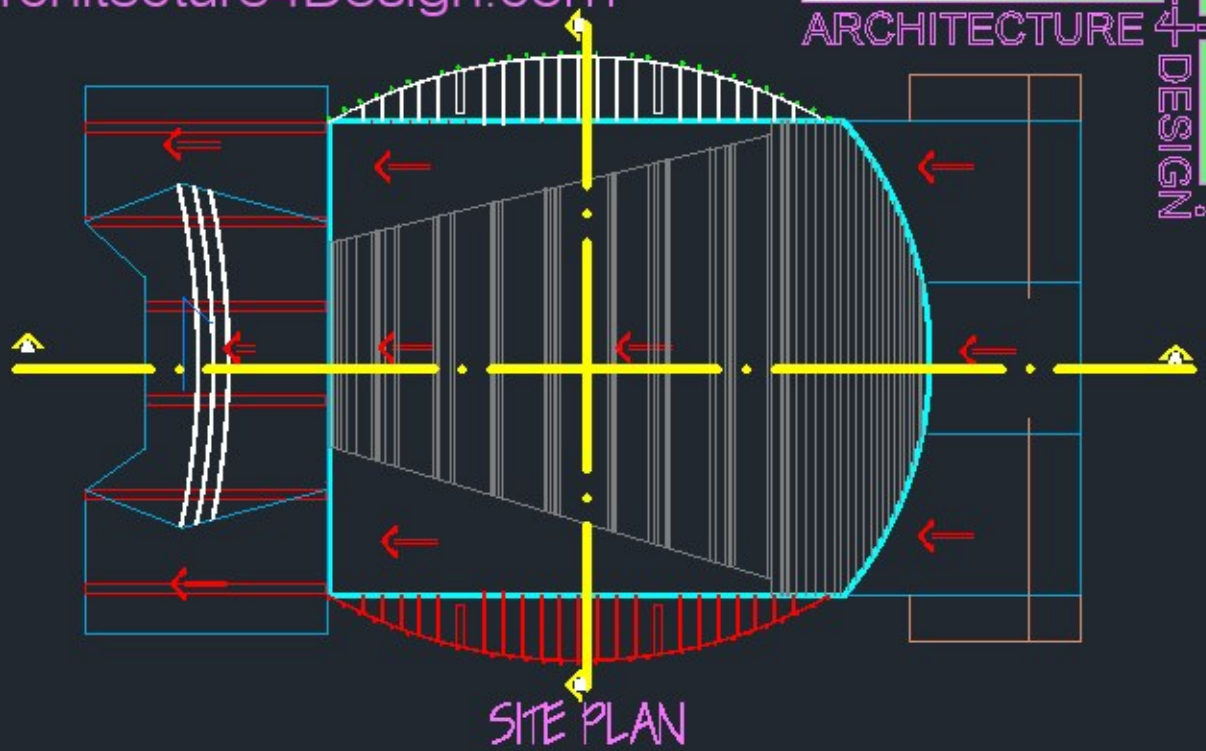
Scale: 1/25



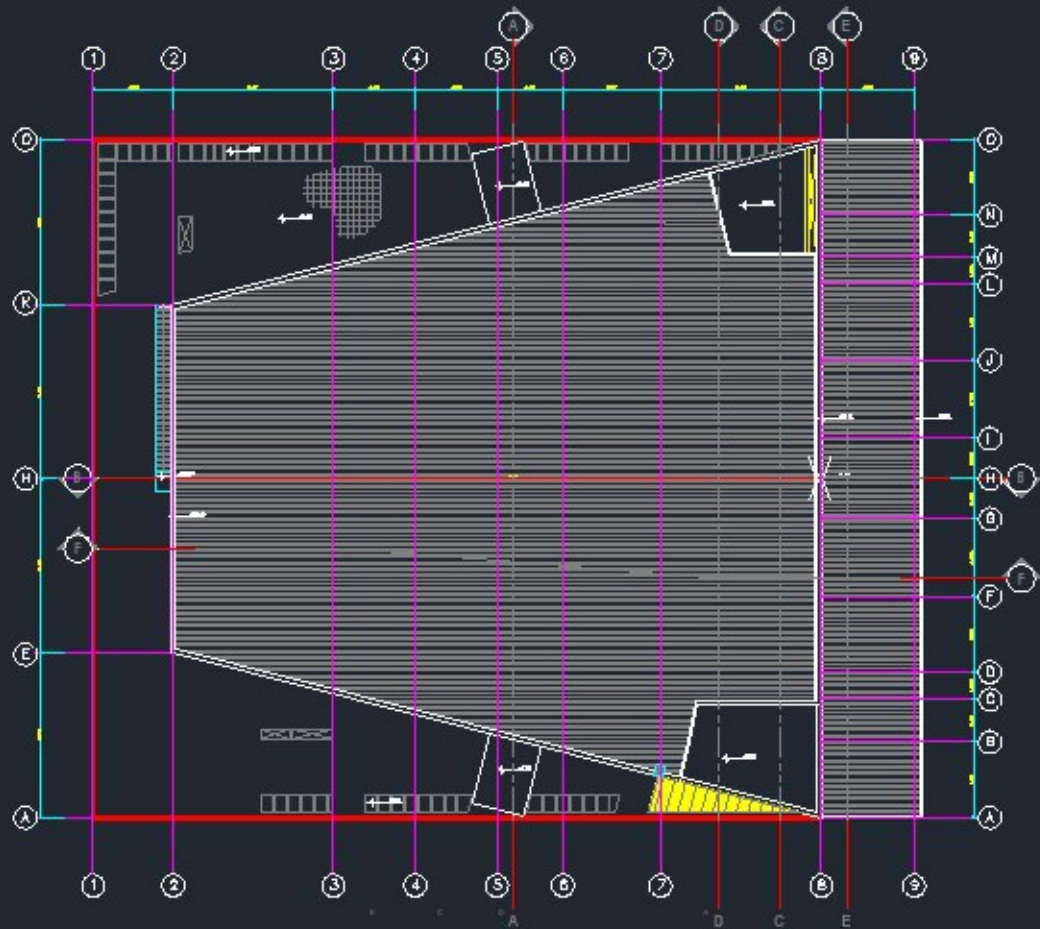
MAIN FLOOR PLAN



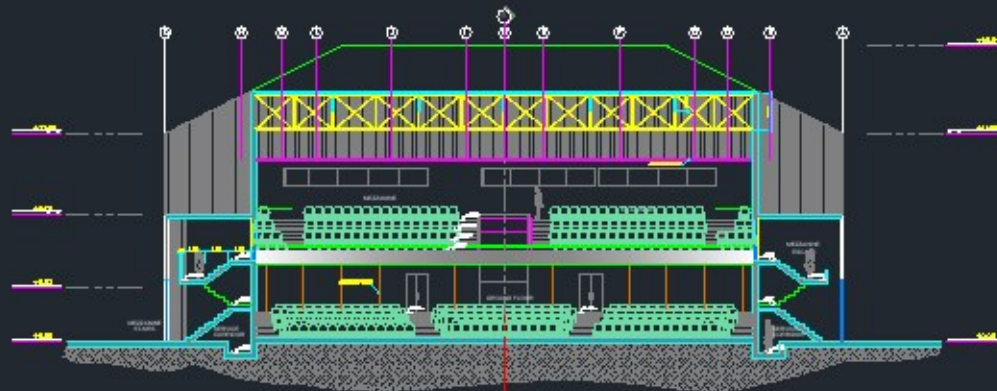
MEZZANINE FLOOR PLAN







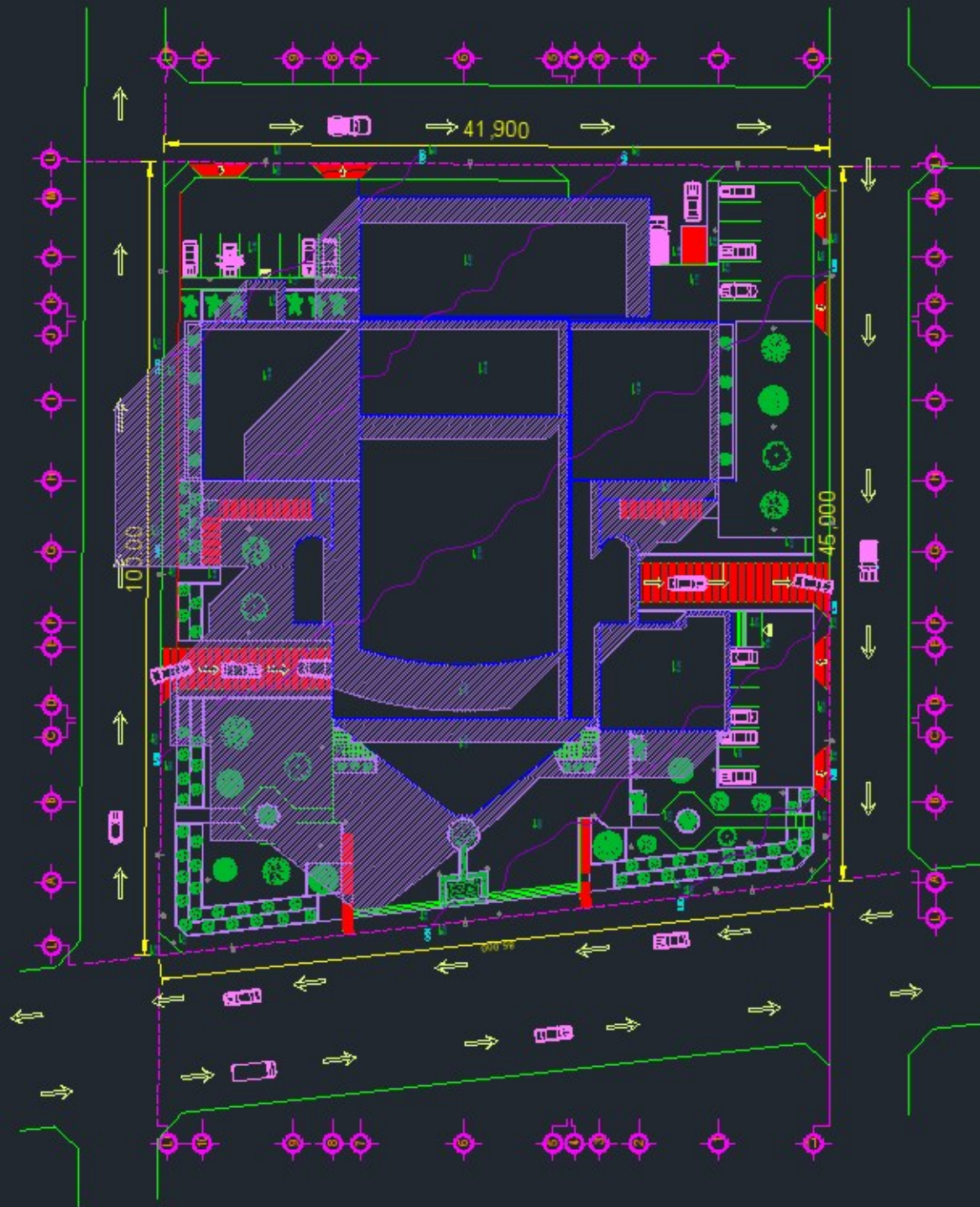
SITE PLAN



SECTION A-A

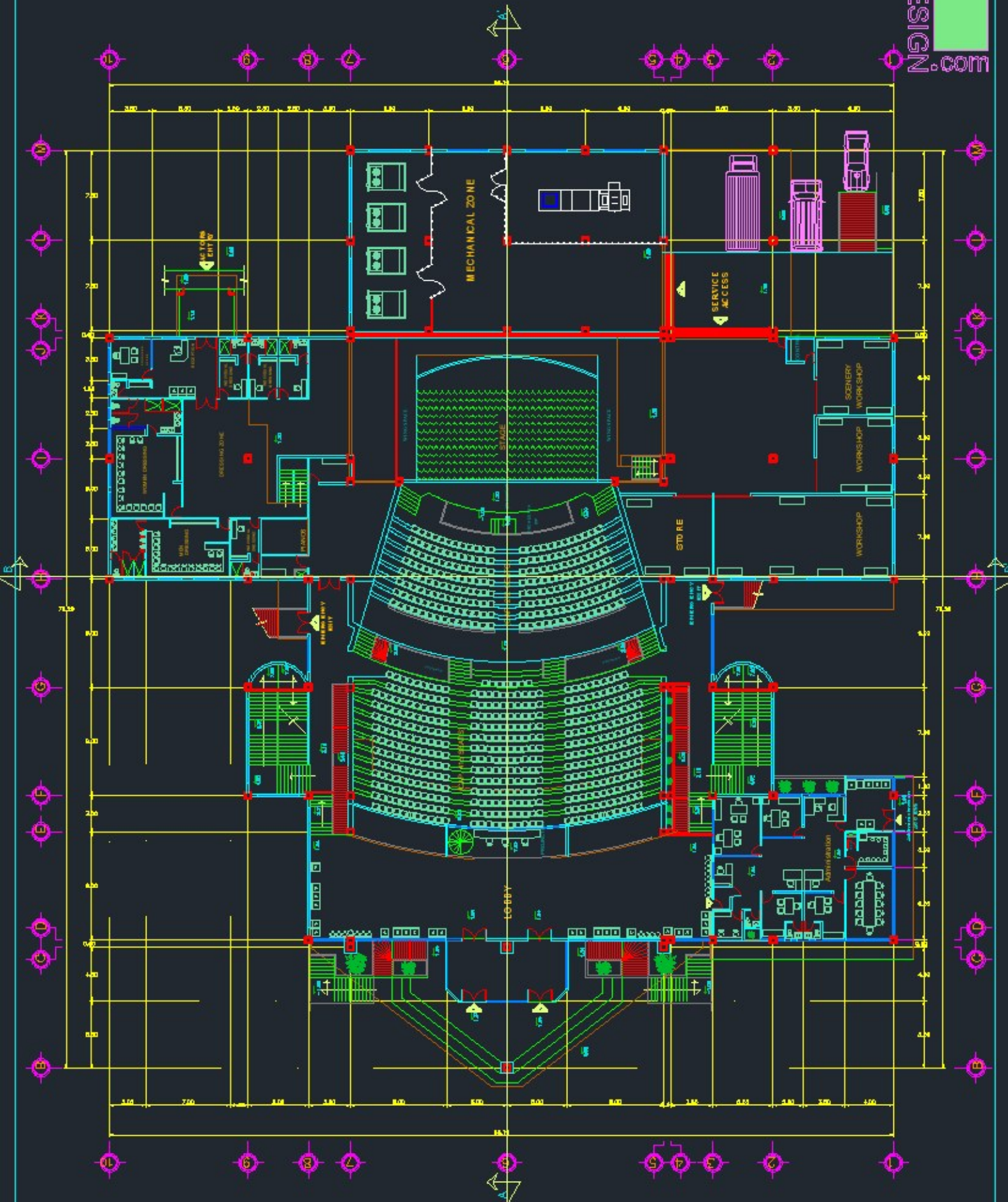


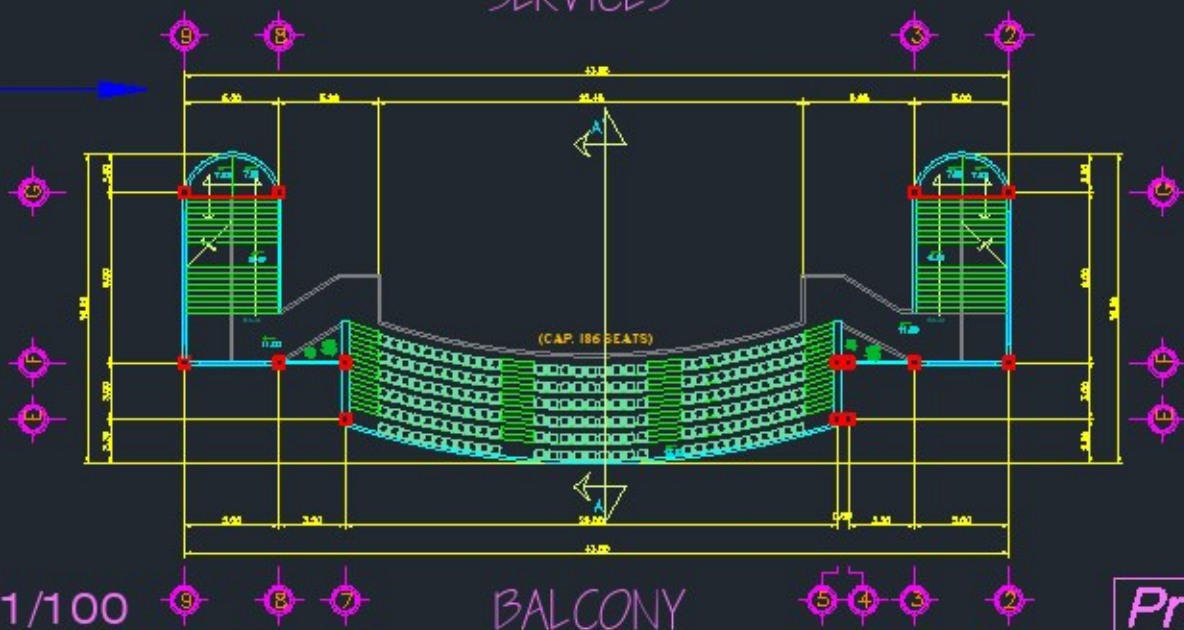
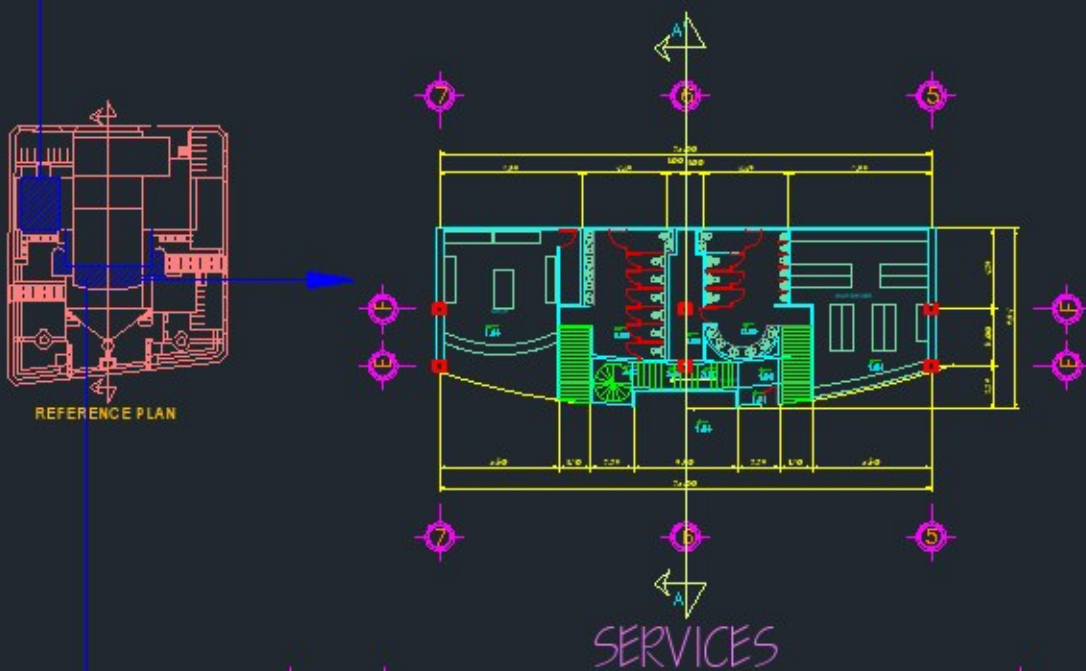
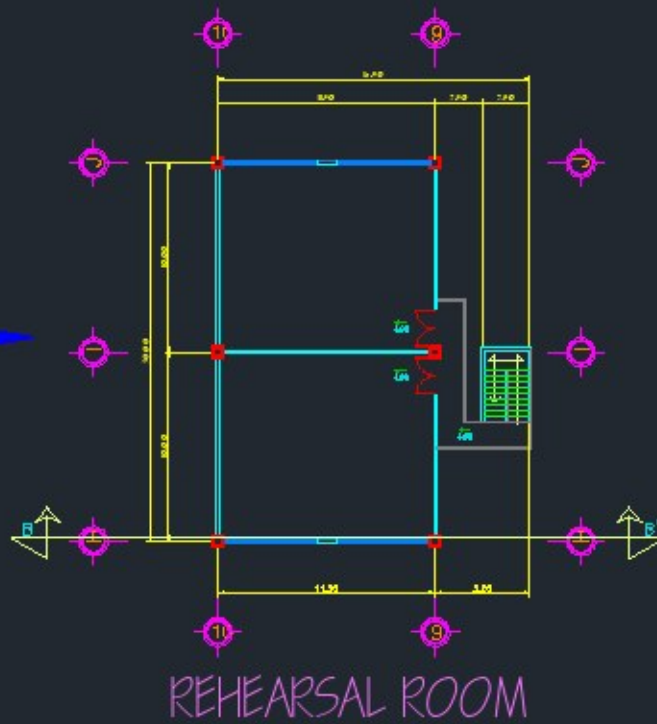
SECTION B-B





Project 9

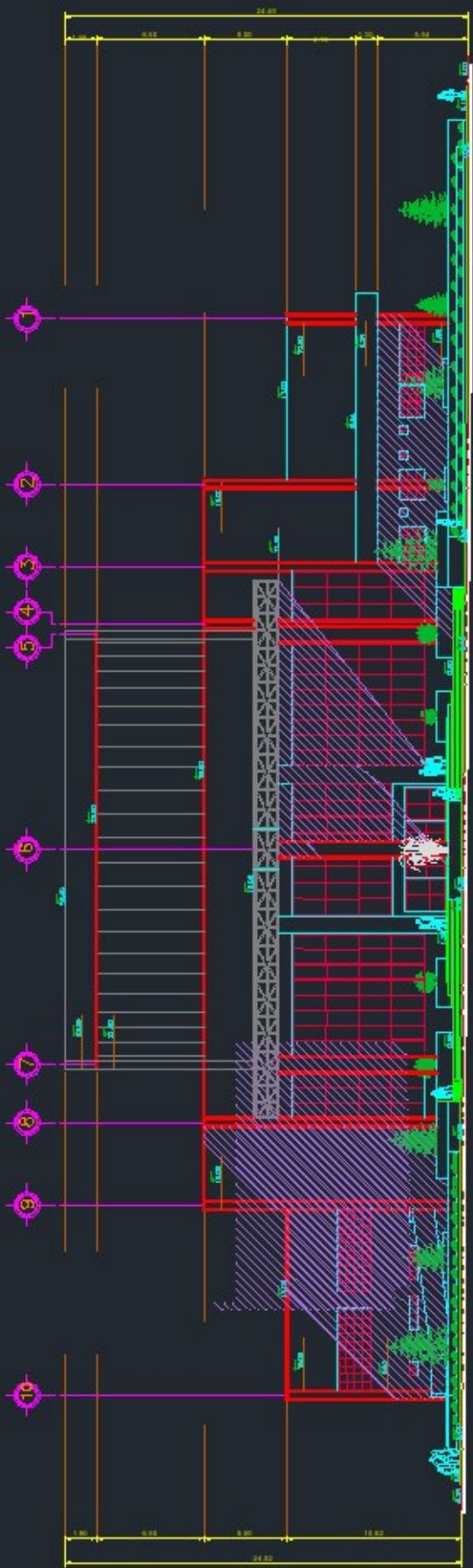


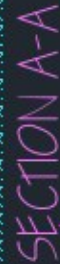


Scale: 1/100

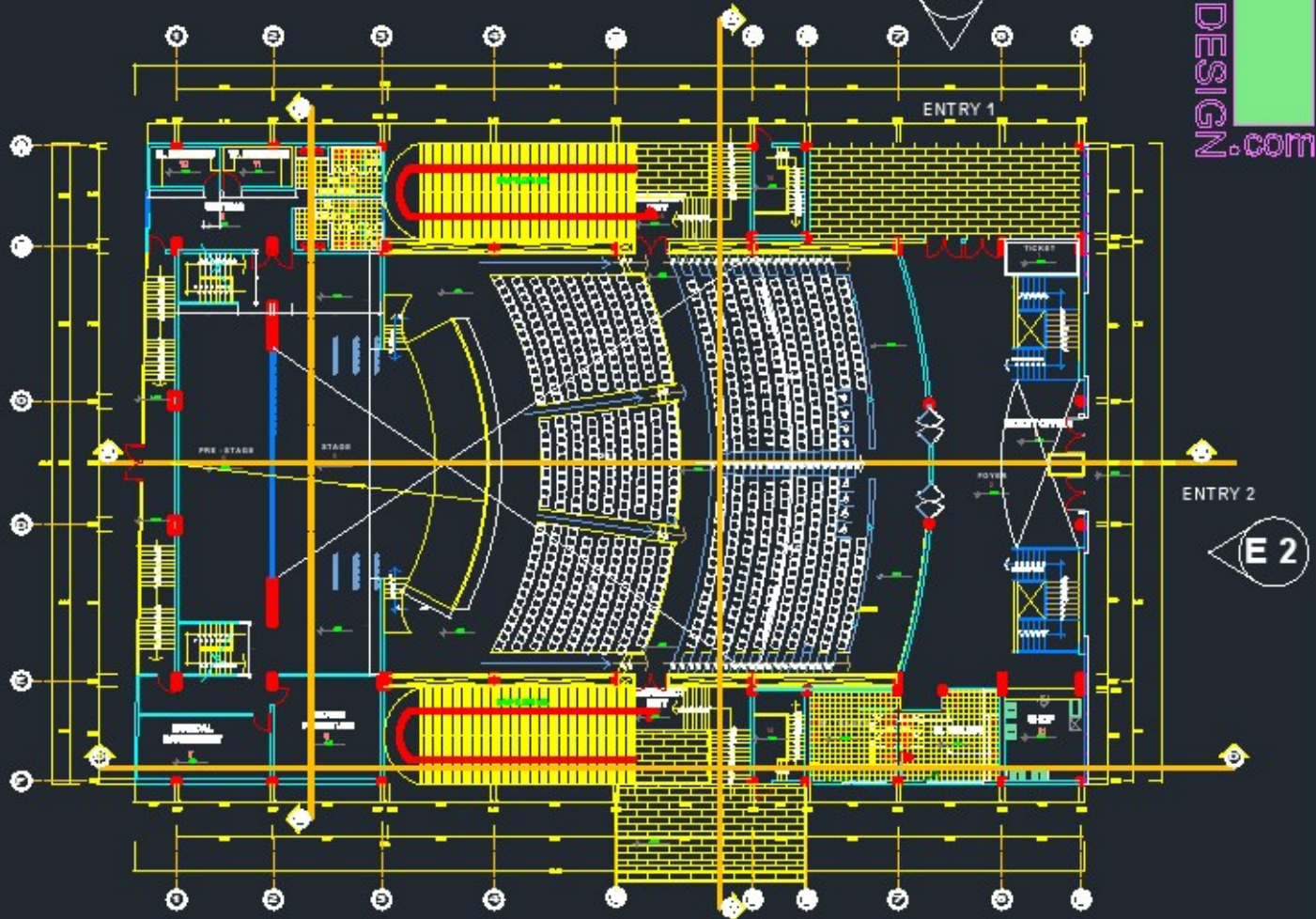
BALCONY

Project 9

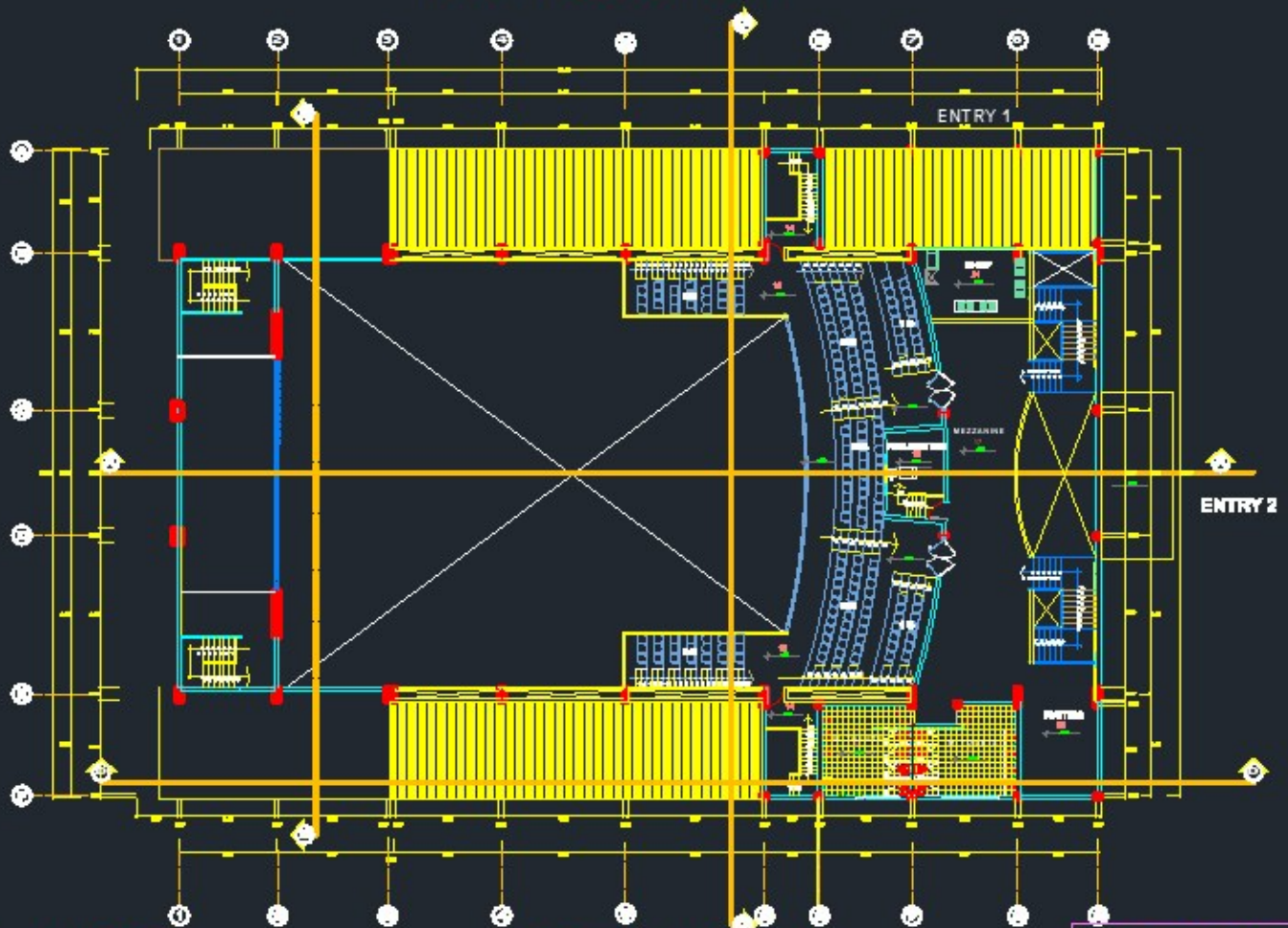




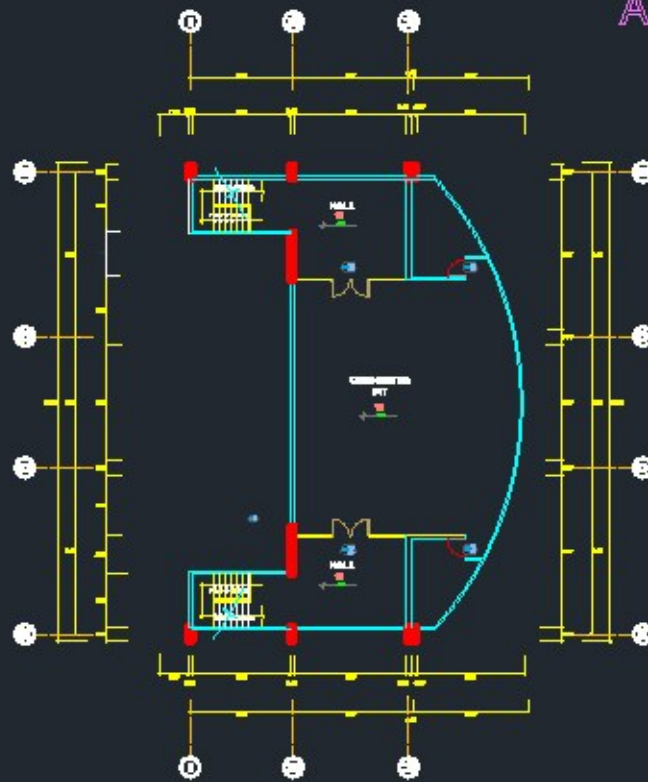
Project 9



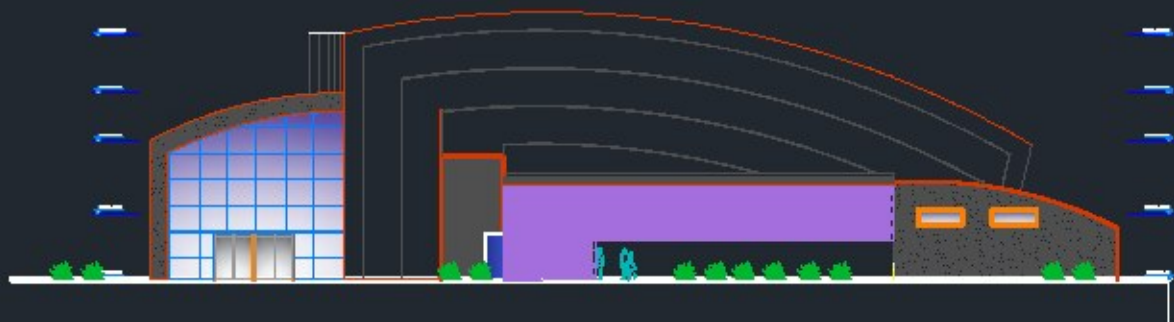
MAIN FLOOR PLAN



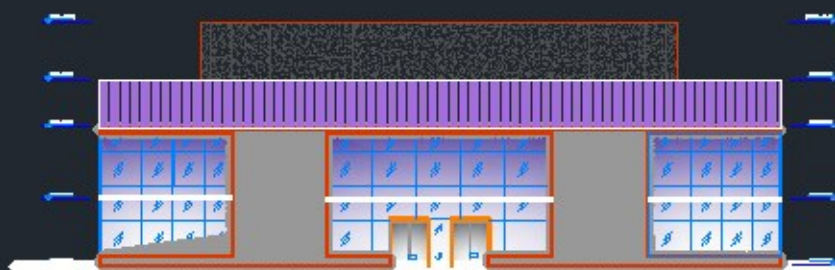
MEZZANINE PLAN



ORCHESTRA PIT PLAN



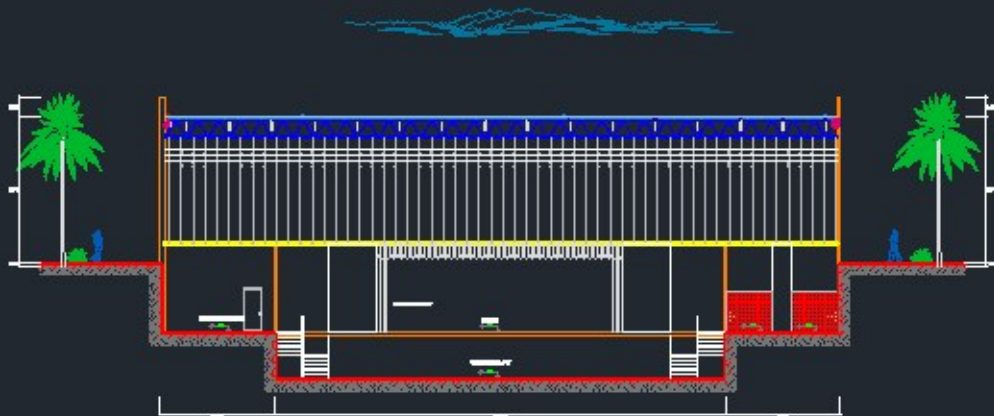
"E1" ELEVATION



"E2" ELEVATION

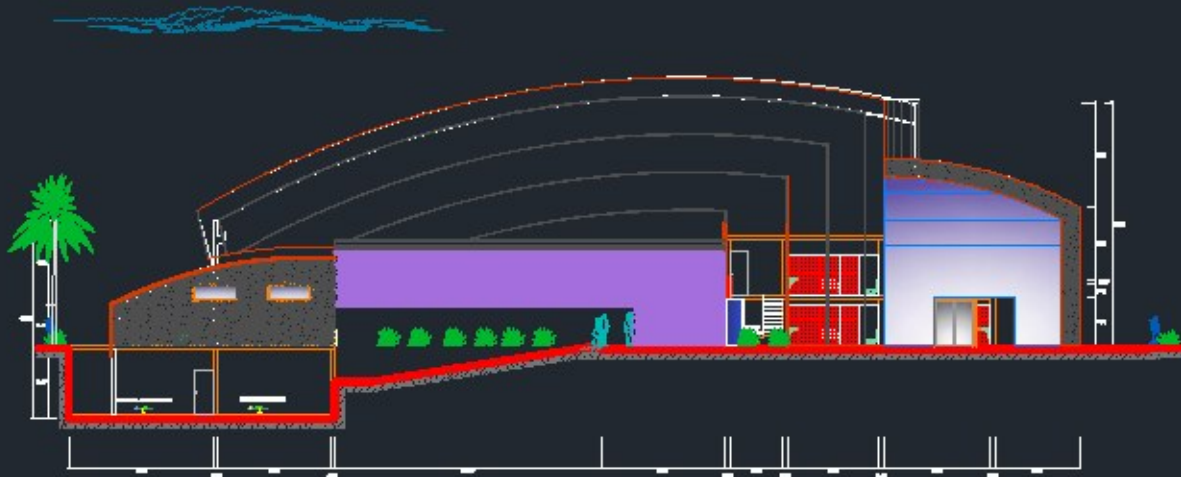


SECTION A-A



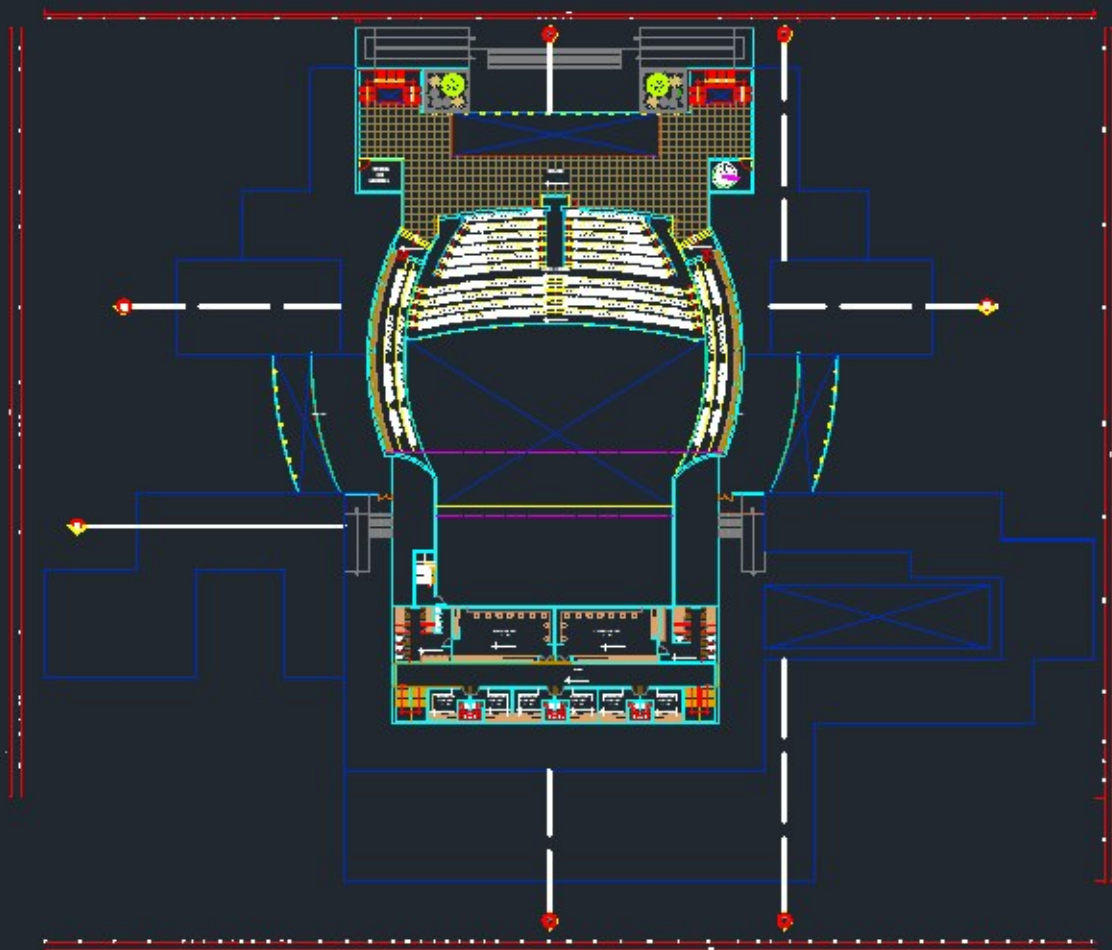


SECTION C-C





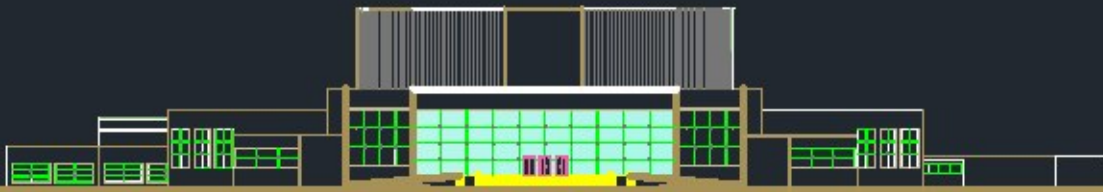
GROUND FLOOR PLAN



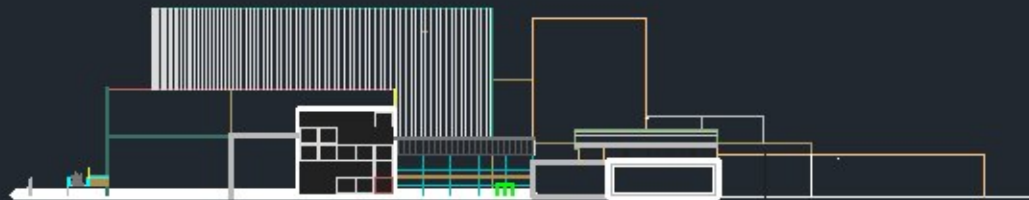
MEZZANINE PLAN



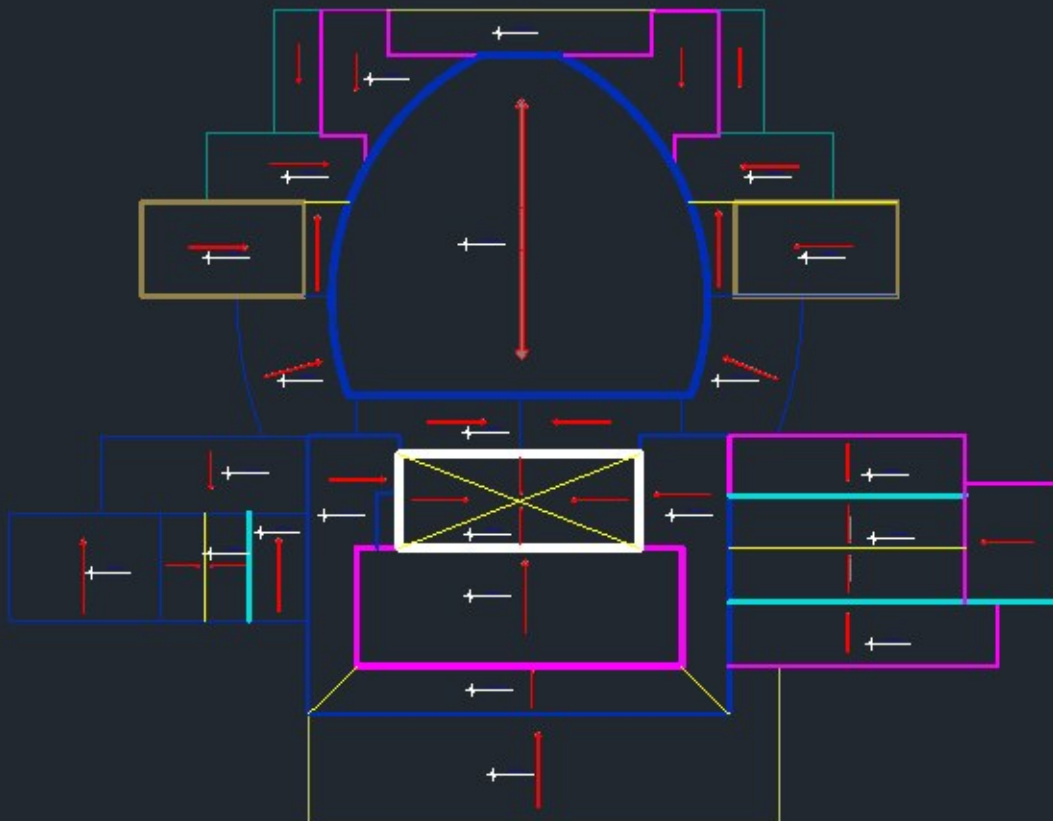
SIDE ELEVATION



MAIN ELEVATION



SIDE ELEVATION



ROOF PLAN



SECTION A-A



SECTION B-B



SECTION C-C



SECTION D-D